



Aesthetics Performance Versatility

These are the elements that define the Studio range. Effortlessly becoming the focal point of your interior, a Studio fire brings far more than just heat to your home.

Each fire is designed to seamlessly blend beauty and performance, offering superb flame visuals and high efficiency heating, all at the touch of a button.

Presented with a variety of elegant styling options, the Studio range lets you tailor your fire to complete your home.





Studio 3 Balanced Flue, Expression frame in Graphite with Log-effect fuel bed and Vermiculite Lining.

Relax - it's a Gazco Fire...

When you choose Gazco, quality and innovative technology are assured. From traditional models to contemporary designs, Gazco is committed to creating the ultimate flame-effect gas and electric fires. Our research and development laboratories are amongst the most advanced in the world, ensuring that the very latest innovations are incorporated into our appliances.

Gazco is an ISO9001 accredited company. Our rigorous quality control system ensures that all our appliances comply with British safety standards as well as stringent European regulations. All fires in this brochure are CE marked. This means they have been independently tested to exacting European standards for safety as well as both heating efficiency and emissions.



Studio 2 Conventional Flue, Steel 2 frame in Graphite with Pebble & Stone fuel bed and Black Glass lining.

Expert Retailer Network

We take great care to ensure that our fires are designed, tested and manufactured to the highest possible quality and safety standards.

We are equally careful to make certain they are sold and installed correctly so you can enjoy years of pleasure from your fire. Our products are only available from experienced, independent retailers who will be happy to show you a selection of models locally in their showrooms, often fully operational. These independent retailers will discuss your individual requirements, including both technical (such as sizing the heat output to your room and advising on your flue type) and design, and ensure that you select the most appropriate product for your home.

Our experienced retailers will also be able to advise on, or assist with, the installation process as well as help provide any after-sales support and servicing your appliance may require in the future.

Whilst we encourage our retailers to promote fireplace products and their outlets via the internet, we do not believe suitable levels of customer care and satisfaction can be obtained from purchasing the product only online and we would strongly recommend that you consider this when undertaking your research and making a purchasing decision. Furthermore, please be aware that we do not offer technical support (beyond our statutory responsibilities) for products bought via nationwide online sales, where this support would normally be offered by one of our qualified, independent retailers.

Five Year Extended Warranty

Your Gazco Expert Retailer will provide you with a Two Year Warranty for your new gas fire. This can be extended to a Five Year Warranty by registering your fire with Gazco. Please note, these warranties exclude certain consumable parts. Fires purchased outside of Gazco's Expert Retailer Network will carry a standard 1 Year non-extendable Warranty. Full warranty terms and conditions are available to view at www.gazco.com.



Contents

How to Choose your Studio fire	06
Studio Flue Types	08
Conventional Flue CF	
Fuel Effects	10
Size Options	12
Frame Options	14
Lining Options	16
Studio 1	18
Studio 2	22
Studio 1 & 2 Freestanding	26
Studio 1, 2 & 3 Open Fronted	30
Balanced Flue BF	
Fuel Effects	32
Size Options	34
Frame Options	36
Lining Options	38
Studio 1	40
Studio 2	42
Studio 3	44
Studio 22	46
Studio 1 & 2 Slimline	50
Studio Slimline Zero Clearance Range	56
Studio Slimline Monaco Surround	60
Studio 2 Duplex	62
Studio 1 & 2 Freestanding	66
Coloured Frame Options	70
Summary	72
Technical Information	74
Your Home & Flue Requirements	88

How to choose your Studio fire...

With a wealth of design options complemented by a choice of sizes, linings and fuel bed effects, these beautifully contemporary fires will add instant style and presence to any modern interior. The following pages will guide you through the wide selection of possibilities and styling options that are synonymous with the Studio range...



Step 1 Flue Types

Studio fires are available in conventional flue and balanced flue versions, allowing you to install your fire with or without a chimney.

See pages 8-9 for further details.

Step 2 Fuel Effects

With several different fuel effects to choose from, including realistic logs for traditional fire ambience, or stylish stone for a contemporary centrepiece, you choose the bed for your flames.

Step 3 Sizes

Studio fires are available in a variety of sizes including landscape and portrait models depending on which flue type is selected.

Step 4 Frames

Studio fires can be styled to perfectly suit your décor. Choose to install your Studio as a frameless Edge or with one of the many stylish steel and glass frames available.

Step 5 Linings

Choose the perfect lining to enhance your Studio's flames from the variety of options available. Each lining offers a backdrop for the stunning visuals.



CF Conventional Flue

Pages 10-11

Pages 12-13

Pages 14-15

Pages 16-17

BF Balanced Flue



Pages 32-33



Pages 34-35



Pages 36-37



Pages 38-39

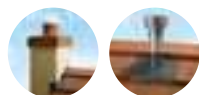
Studio Flue Types

Studios fires can be installed with or without a chimney, depending on the type of fire. Suitable for a wide range of homes, this versatile fire collection can be configured to suit your requirements.



Studio 3 Balanced Flue, Verve frame in Graphite with Log-effect fuel bed and Vermiculite lining.

Conventional Flue



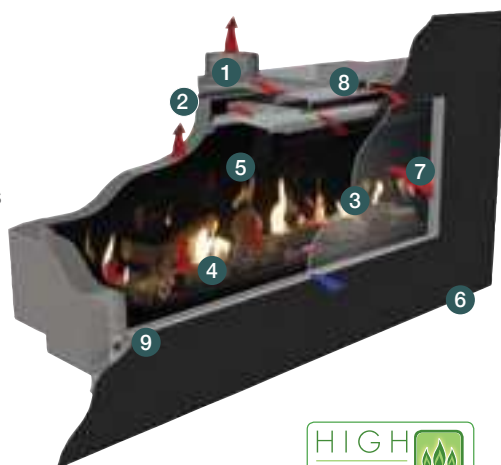
Conventional flue Studio fires are designed to use an existing brick or stone chimney, or if your home does not have a chimney, a prefabricated chimney system that can be fitted when your fire is installed.

A prefabricated chimney system creates the same circulation of heated air as a brick or stone chimney and exits the roof as a metal flue.

Conventional flue Studio fires include the Open Fronted range as well as the high efficiency Glass Fronted range which incorporates both inset and freestanding fires.

Key Features

1. Conventional Flue connection
2. Linerless installation with no need for additional adapters†
3. Open Fronted or Glass Fronted models
4. Choice of fuel effects†
5. Choice of linings†
6. Choice of frame styles
7. Convected and radiant heat†
8. Convected heat system outlet†
9. Simple drop down door for easy maintenance access†
10. Remote control included*
11. External battery holders for ease of battery change
12. Optional mains adaptor



* Illustrated below
† Glass fronted models only

Balanced Flue



Balanced flue Studio fires do not require a chimney. Instead, a twin-walled pipe going from the fire to the exterior of the property draws in combustion air whilst also removing flue gases. Depending on which fire is selected, the twin-wall pipe can exit horizontally through an outside wall or vertically through the roof.

Balanced flue Studios are high efficiency Glass Fronted fires and are completely sealed from the room they are installed in. These include the Studio Inset and Freestanding ranges, Studio 2 Duplex, Studio Slimline range and the Studio 22.

Key Features

1. Balanced Flue connection
2. Variety of flueing options for location flexibility
3. Glass Fronted
4. Choice of fuel effects
5. Choice of linings
6. Choice of frame styles
7. Convected and radiant heat
8. Convected heat system outlet
9. Simple drop down door for easy maintenance access
10. External battery holders for ease of battery change
11. Programmable Thermostatic remote control included*
12. Optional mains adaptor



* Illustrated below

For further information on your flue and air vent requirements please see page 88.

Remote Controls

All Open Fronted fires in the Studio range are supplied with a state-of-the-art Standard remote control, allowing you to operate everything from ignition to flame height and heat output from the comfort of your sofa. The Glass Fronted Studios come complete with a Programmable Thermostatic remote that also includes the additional benefits of a programmable timer and thermostatic controls, ensuring that whenever you return home, your house will always be warm and welcoming. Studio fires have an external battery which can be discretely and conveniently located up to 3 metres away from the fire. Alternatively you can choose the optional mains adaptor for an installation without batteries. Open Fronted Studios also have a wall mounted, flat Touch Control Panel.



Left: Standard remote for Open Fronted Studio fires

Right: Programmable Thermostatic remote for Glass Fronted Studio fires

Conventional Flue Studio Fuel Effects

The fuel effects in each Studio fire are designed to create a stunning centrepiece, whether you choose the traditional ambience of the log or driftwood effects or the contemporary minimalism of pebbles and stones.



Log-effect (Glass Fronted)



Conventionally flued Glass Fronted Studio fires can also be selected with the highly realistic, hand-painted Log-effect fuel bed, for a natural woodburning aesthetic that looks just like a real log fire. Tall flames jump and flow between the logs for a mesmerising focal point that will captivate and entice.

Driftwood-effect (Glass Fronted)



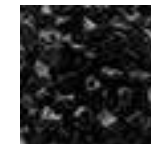
Available for Glass Fronted Studio 1 and 2 fires, this alternative fuel effect transforms either size with an authentic looking driftwood composition. Presented on a bed of stones, each piece is precisely painted to resemble real weathered beach driftwood for a natural, look with a modern twist.

Pebble & Stone (Glass Fronted)



Ceramic pebbles positioned on a bed of stones offer an ambient beach vibe with this beautifully contemporary fuel effect for Glass Fronted Studio fires. Featuring tall flames that dance across the white stones, this stylish fuel effect makes for a striking, designer statement.

White Stones or Glass Beads (Open Fronted)



Open Fronted Studio fires feature a contemporary ribbon of flames on a bed of white stones, which can be upgraded to red*, black or clear glass beads. Echoing the fire's clean form, these minimalist fuel effects create a designer statement that can be appreciated with or without the flames.

* Please note that the red Glass Beads will darken when burning and then return to their original colour when cool.

Conventional Flue Studio Sizes

For optimal versatility, Studio fires are available in a choice of sizes and heat outputs to suit a variety of interior spaces.



Studio 2 Conventional Flue Edge+ with
Pebble & Stone fuel bed and Vermiculite lining

Glass Fronted Fires

Studio 1 (page 18)

The Studio 1 is the smallest glass fronted Inset and Freestanding size in the range. With a high efficiency heat output of 4.97kW, it is suitable for most standard room sizes and does not normally require an additional air vent.



Studio 1 Conventional flue with Pebble & Stone fuel bed

Studio 2 (page 22)

The largest conventional flue glass fronted Inset and Freestanding Studio size, the Studio 2 is a great choice for larger rooms that benefit from the generous 6.97kW high efficiency heat output.



Studio 2 Conventional flue with Log-effect fuel bed

Open Fronted Fires

Studio 1 (page 30)

The Open fronted Studio 1 provides superb flame visuals with a heat output of 1.72kW. Due to its smaller size, this fire can normally be installed without an additional air vent.



Studio 1 Open Fronted, Conventional flue with White Stone fuel bed

Studio 2 (page 30)

Offering a heat output 2.30kW, the midsize Open fronted Studio 2 presents a great balance of heat and flame picture.



Studio 2 Open Fronted, Conventional flue with White Stone fuel bed

Studio 3 (page 30)

Presenting a stunning vista of the flames, the Open fronted Studio 3 can provide up to 3.40kW of heat. This size is also available as a high efficiency, glass fronted version in balanced flue only (see page 32 onwards).



Studio 3 Open Fronted, Conventional flue with White Stone fuel bed

Conventional Flue

Studio Frame Options

Studio fire frames let you tailor your fire to your décor, with a variety of styles, materials and colours to choose from.



Studio 2 Open Fronted Conventional Flue, Glass frame with Black Glass Bead fuel bed

Edge Pages 6, 19, 20, 24, 31 & 75



Edge+ Pages 12 & 22



Pienza & Firenze* Pages 17 & 30



Limestone

* Suitable for Open Fronted Studio 1 & 2 fires only



Granite

Profil Pages 10, 16, 20, 23, 30 & 71



Anthracite or Polished Stainless Steel

Verve Page 23



Graphite

Glass Pages 14, 18 & 74



Black Glass

Steel 2 Pages 4 & 25



Graphite

Bauhaus Pages 19 & 70



Anthracite or Polished Stainless Steel

Expression# Pages 21 & 24



Graphite

Suitable for Glass Fronted Studios only

Freestanding Pages 26-29 & 85



White or Black front

Studio Coloured Frame Options

For those who want to add a splash of colour to their living space, Studio Profil, Bauhaus, Expression, Verve and Steel 2 frames are also available in three eye-catching colours; Metallic Red, Metallic Bronze and Ivory. For full details please see pages 70 - 71.

Conventional Flue Lining Options

Studio gas fires are highly customisable and their choice of stylish lining options is no exception. Depending on the model, each fire can be styled to your tastes with a range of different linings that offer a dramatically different aesthetic for your fire.





	Black Steel	Polished Black Granite	Vermiculite	Black Reeded	Black Glass
Glass Fronted Studio Conventional Flue	x	x	✓	✓	✓
Open Fronted Studio Conventional Flue	✓	✓ (Upgradeable)	x	x	x



Studio 2 Open Fronted Conventional Flue, Firenze frame with Red Glass Bead fuel bed



Black Glass Lining shown with Pebble & Stone fuel effect



Studio 1 Conventional Flue, Glass Frame with Pebble & Stone fuel bed and Black Reeded lining

Studio 1 Conventional Flue



Studio 1 Conventional Flue, Bauhaus Frame in Anthracite with Log-effect fuel bed and Vermiculite lining



Studio 1 Conventional Flue, Edge with Driftwood-effect fuel bed and Black Glass lining

	Efficiency & Heat Output	Chimney or Flue Options	Gas Type	Fuel Bed	Linings	Control
	[†] EFFICIENCY HEAT OUTPUT	BRICK CHIMNEY PRE-FABRICATED BALANCED FLUE	NATURAL GAS LPG GAS	LOGS DRIFTWOOD PEBBLE & STONE	VERMICULITE BLACK REEDED BLACK GLASS	PROGRAMMABLE THERMOSTATIC REMOTE
Studio 1 Glass Fronted Conventional Flue	72% 4.97kW	✓ ✓ Pg 40	✓ ✓	✓ ✓ ✓	✓ ✓ ✓	✓

Frame Options
 For the complete selection of frames available with Studio Conventional Flue fires please see pages 14 - 15.

Studio Open Fronted fires are shown on pages 30 - 31.

[†] Efficiency and heat output figures are based upon the maximum achieved in the options available. For more detailed technical information, including firebox dimensions and installation requirements, see pages 76 - 78.

Studio 1 Conventional Flue (continued)



Studio 1 Conventional Flue, Edge with Pebble & Stone fuel bed and Vermiculite lining



Studio 1 Conventional Flue, Profil in Stainless Steel with Log-effect fuel bed and Black Reeded lining

	Efficiency & Heat Output†	Chimney or Flue Options			Gas Type		Fuel Bed			Linings			Control	
	E% EFFICIENCY	kW HEAT OUTPUT	BRICK CHIMNEY	PRE-FABRICATED	BALANCED FLUE	NATURAL GAS	LPG GAS	LOGS	DRIFTWOOD	PEBBLE & STONE	VERMICULITE	BLACK REEDED	BLACK GLASS	PROGRAMMABLE THERMOSTATIC REMOTE
Studio 1 Glass Fronted Conventional Flue	72%	4.97kW	✓	✓	Pg 40	✓	✓	✓	✓	✓	✓	✓	✓	✓

Frame Options
 For the complete selection of frames available with Studio Conventional Flue fires please see pages 14 - 15.

Studio Open Fronted fires are shown on pages 30 - 31.

† Efficiency and heat output figures are based upon the maximum achieved in the options available. For more detailed technical information, including firebox dimensions and installation requirements, see pages 76 - 78.



Studio 1 Conventional Flue, Expression in Graphite with Driftwood-effect fuel bed and Black Glass lining

Studio 2 Conventional Flue, Edge+ with
Log-effect fuel bed and Vermiculite lining



Studio 2 Conventional Flue



Studio 2 Conventional Flue, Profil frame in Graphite with Driftwood-effect fuel bed and Black Glass lining



Studio 2 Conventional Flue, Verve frame in Graphite with Pebble & Stone fuel bed and Black Reeded lining

	Efficiency & Heat Output†		Chimney or Flue Options			Gas Type		Fuel Bed			Linings			Control
	E%	kW	BRICK CHIMNEY	PRE-FABRICATED	BALANCED FLUE	NATURAL GAS	LPG GAS	LOGS	DRIFTWOOD	PEBBLE & STONE	VERMICULITE	BLACK REEDED	BLACK GLASS	PROGRAMMABLE THERMOSTATIC REMOTE
Studio 2 Glass Fronted Conventional Flue	81%	6.90kW	✓	✓	Pg 42	✓	✓	✓	✓	✓	✓	✓	✓	✓

Frame Options

For the complete selection of frames available with Studio Conventional Flue fires please see pages 14 - 15.

Studio Open Fronted fires are shown on pages 30 - 31.

† Efficiency and heat output figures are based upon the maximum achieved in the options available. For more detailed technical information, including firebox dimensions and installation requirements, see pages 76 - 78.

Studio 2 Conventional Flue (continued)



Studio 2 Conventional Flue, Edge with Driftwood-effect fuel bed and Vermiculite lining



Studio 2 Conventional Flue, Expression frame in Graphite with Pebble & Stone fuel bed and Black Reeded lining

	Efficiency & Heat Output†		Chimney or Flue Options			Gas Type		Fuel Bed			Linings			Control
	EFFICIENCY	HEAT OUTPUT	BRICK CHIMNEY	PRE-FABRICATED	BALANCED FLUE	NATURAL GAS	LPG GAS	LOGS	DRIFTWOOD	PEBBLE & STONE	VERMICULITE	BLACK REEDED	BLACK GLASS	PROGRAMMABLE THERMOSTATIC REMOTE
Studio 2 Glass Fronted Conventional Flue	81%	6.90kW	✓	✓	Pg 42	✓	✓	✓	✓	✓	✓	✓	✓	✓

Frame Options
 For the complete selection of frames available with Studio Conventional Flue fires please see pages 14 - 15.

Studio Open Fronted fires are shown on pages 30 - 31.

† Efficiency and heat output figures are based upon the maximum achieved in the options available. For more detailed technical information, including firebox dimensions and installation requirements, see pages 76 - 78.



Studio 2 Conventional Flue, Steel 2 frame in Graphite with Log-effect fuel bed and Black Glass lining

Studio 1 Freestanding Conventional Flue



Studio 1 Freestanding Conventional Flue with White front and bench, Log-effect fuel bed and Vermiculite lining



Studio 1 Freestanding Conventional Flue with White front and plinth, Driftwood-effect fuel bed and Black Reeded lining

	Efficiency & Heat Output†		Chimney or Flue Options			Gas Type		Fuel Bed			Linings			Control
	E%	kW	BRICK CHIMNEY	PRE-FABRICATED	BALANCED FLUE	NATURAL GAS	LPG GAS	LOGS	DRIFTWOOD	PEBBLE & STONE	VERMICULITE	BLACK REEDED	BLACK GLASS	PROGRAMMABLE THERMOSTATIC REMOTE
Studio 1 Freestanding Conventional Flue	72%	4.97kW	✓	✓	Pg 66	✓	✓	✓	✓	✓	✓	✓	✓	✓

† Efficiency and heat output figures are based upon the maximum achieved in the options available. For more detailed technical information, including firebox dimensions and installation requirements, see page 84.

Mounting Options

Studio Freestanding fires can be selected with a curved Plinth or Bench mount in either matching white or black finishes.



Studio 1 Freestanding Conventional Flue with Black front and bench, Pebble & Stone fuel bed and Black Glass lining



Studio 2 Freestanding Conventional Flue with White front and plinth, Log-effect fuel bed and Black Glass lining

Studio 2 Freestanding Conventional Flue



Studio 2 Freestanding Conventional Flue with Black front and bench, Driftwood-effect fuel bed and Black Reeded lining



Studio 2 Freestanding Conventional Flue with Black front and plinth, Pebble & Stone fuel bed and Vermiculite lining

	Efficiency & Heat Output†		Chimney or Flue Options			Gas Type		Fuel Bed			Linings			Control
	E%	kW	BRICK CHIMNEY	PRE-FABRICATED	BALANCED FLUE	NATURAL GAS	LPG GAS	LOGS	DRIFTWOOD	PEBBLE & STONE	VERMICULITE	BLACK REEDED	BLACK GLASS	PROGRAMMABLE THERMOSTATIC REMOTE
Studio 2 Freestanding Conventional Flue	81%	6.90kW	✓	✓	Pg 68	✓	✓	✓	✓	✓	✓	✓	✓	✓

Mounting Options
 Studio Freestanding fires can be selected with a curved Plinth or Bench mount in either matching white or black finishes.

† Efficiency and heat output figures are based upon the maximum achieved in the options available. For more detailed technical information, including firebox dimensions and installation requirements, see page 86.

Studio 1, 2 & 3 Conventional Flue Open Fronted



Studio 1 Open Fronted^A Conventional Flue, Profil frame in Polished Stainless Steel finish with Clear Glass Bead fuel bed



Studio 1 Open Fronted Conventional Flue, Pienza frame with White Stone fuel bed

	Efficiency & Heat Output†		Chimney or Flue Options			Gas Type		Fuel Bed		Linings		Control
	E%	kW	Brick Chimney	Pre-fabricated	Balanced Flue	Natural Gas	LPG Gas	White Stones	Glass Beads [‡]	Black Steel	Polished Black Granite [‡]	Standard Remote
Studio 1 Open Fronted Conventional Flue	25%	1.72kW	✓	✓	Pg 40	✓	✓	✓	✓	✓	✓	✓
Studio 2 Open Fronted Conventional Flue	25%	2.30kW	✓	✓	Pg 42	✓	✓	✓	✓	✓	✓	✓
Studio 3 Open Fronted Conventional Flue	25%	3.40kW	✓	✓	Pg 44	✓	✓	✓	✓	✓	✓	✓

Frame Options
 For the complete selection of frames available with Studio Conventional Flue fires please see pages 14 - 15.

Studio Glass Fronted, conventional flue fires are shown on pages 18 - 25.

† Efficiency and heat output figures are based upon the maximum achieved in the options available. For detailed technical information, including firebox dimensions, installation and flue gather requirements, see pages 75 - 79.

‡ Upgradeable options



Balanced Flue

Studio Fuel Effects

Studio Balanced flue models feature a choice of either realistic log-effect, driftwood-effect or stylish pebble & stone fuel beds that let you style your fire to suit your tastes.



Studio 3 Balanced Flue, Profil frame in Anthracite with Driftwood-effect fuel bed and Black Glass lining

Log-effect



All Balanced flue Studio fires are available with a highly realistic, hand-painted log-effect fuel bed, creating a traditional woodburning ambience that mimics a real log fire. Cleverly hidden burners create flowing, natural flames that dance between the logs.

Driftwood-effect



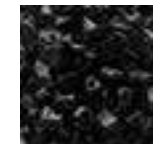
Featuring a highly detailed, true-to-life, bleached wood effect on a bed of dark stones, Driftwood presents a highly realistic, alternative fuel bed option for those looking for an ambient beach feel with a relaxed, contemporary look. This beautiful fuel effect is available for Studio 1, 2 and 3 cassette and freestanding 1 and 2 fires.

Pebble & Stone



Studio 1, 2 and 3 fires, alongside the 1 and 2 freestanding fires, can be selected with Pebble & Stone for a stylish, modern fuel effect. Presenting a collection of ceramic pebbles on a bed of white stones, this eye-catching fuel bed creates a designer statement which perfectly complements the Studio range's minimalist styling.

White Stones or Glass Beads (Studio Slimline)



Studio Slimline 1 and 2 fires can be selected with Gazco's ultra contemporary flame-effect: a bed of white stones for a minimalist designer statement that can be upgraded with either red*, black or clear glass bead sets.

* Please note that the red Glass Beads will darken when burning and then return to their original colour when cool.

Balanced Flue Size Options

Balanced Flue Studio fires are available in up to four different sizes, offering numerous installation possibilities for interiors of all proportions. With three landscape sizes and a portrait option, alongside the double-sided Duplex as well as the latest Slimline options, these Studio fires are the perfect blend of versatility and style.



Studio 22 Balanced Flue, Profil frame in Anthracite with Log-effect fuel bed

Studio 1 (page 40)

The Glass Fronted Studio 1 Balanced Flue fire produces up to 5.20kW of heat at 81% efficiency, and is the smallest in the range. Available with either a log, driftwood or pebble fuel beds, the Studio 1 is also available as a freestanding version which can be seen on pages 66-67.



Studio 1 Balanced flue with Pebble & Stone fuel bed & Black Glass lining

Studio 2 (page 42)

Producing up to 6.97kW of heat the Glass Fronted Studio 2 Balanced Flue fire is more than capable of heating large rooms and has a high efficiency level of 81%. Like the other models in the range, the Studio 2 is available with a choice of either realistic log, driftwood or pebble fuel beds. The Studio 2 is also available as a freestanding version (pages 68-69).



Studio 2 Balanced flue with Log-effect fuel bed & Black Reeded lining

Studio 3 (page 44)

Offering an expansive view of the flames, the breathtaking Glass Fronted Studio 3 Balanced Flue fire creates a visual centrepiece wherever it is installed. This high efficiency fire is more than capable of warming bigger living spaces thanks to its impressive 7.30kW of heat output. As with its smaller 1 and 2 equivalents the Studio 3 can be tailored with a choice of linings and fuel effects.



Studio 3 Balanced flue with Driftwood-effect fuel bed & Vermiculite lining

Studio 1 & 2 Slimline (page 50)



The high efficiency Studio Slimline fires have been specifically designed for cavity wall installations. Offered in a choice of two sizes, they feature an ultra-slim profile whilst still providing a superb view of the flames. Available with a choice of white stone, glass bead or realistic log fuel beds; these Glass Fronted fires provide a generous heat output and are supplied complete with a Balanced Flue rear termination installation kit.

Studio 2 Duplex (page 62)



The double-sided Studio 2 Duplex allows the flame visuals to be enjoyed from either side. Producing up to 7.9kW of heat output, this Glass Fronted balanced flue fire has a highly realistic Log-effect fuel bed.

Studio 22 (page 46)



The portrait format Studio 22 presents a dramatically different aesthetic. Producing up to 5.85kW of heat output, this high efficiency Glass Fronted, Balanced Flue fire has a highly realistic fuel bed to complement the rolling flames.

Balanced Flue Frame Options

Studio fires have many frame options available, including a number of different styles in steel or glass, as well as various colours and finishes. These stunning frame options have all been designed specifically to complement this contemporary fire range and offer you a spectrum of different styling possibilities.

Studio Coloured Frame Options



Studio Profil, Bauhaus, Expression, Verve and Steel 2 frames are available in three additional eye-catching colours; Metallic Red, Metallic Bronze and Ivory. For full details please see pages 70 - 71.

	Studio 1	Studio 2	Studio 3	Studio 22	Studio Slimline	Studio Duplex
Edge	✓	✓	✓	✓	✓	✓
Edge+	✓	✓	✓	✗	✗	✓
Profil	✓	✓	✓	✓	✓	✓
Bauhaus	✓	✓	✓	✓	✓	✓
Expression	✓	✓	✓	✓	✓	✓
Steel 2	✓	✓	✓	✓	✓	✓
Glass	✓	✓	✓	✗	✓	✓
Verve	✓	✓	✓	✓	✓	✓
Sorrento	✗	✗	✗	✓	✗	✗
ZC Glass & Steel	✗	✗	✗	✗	✓	✗
Monaco	✗	✗	✗	✗	✓*	✗
Studio Freestanding <small>Complete product</small>	✓	✓	✗	✗	✗	✗

* Studio 1 Slimline only.

Edge

Pages 38, 54 & 64



Edge+

Pages 42 & 44



Freestanding

Pages 66 - 69



White or Black Steel front

Bauhaus

Pages 41, 44, 46, 55 & 65



Anthracite or Polished Stainless Steel

Expression

Pages 3, 40, 45, 47 & 52



Graphite

Sorrento

Pages 48 & 49



Natural Limestone or Graphite Granite

Verve

Pages 8, 33 & 53



Graphite

Aerial View Below

Steel 2

Pages 43, 49, 55, 70 & 72



Graphite

Glass

Pages 40, 51 & 62



Black Glass

Profil

Pages 32, 34, 43, 50, 52 & 64



Anthracite or Polished Stainless Steel

Monaco

Page 61



Concrete with Black Granite top

ZC Glass

Pages 57 - 59



Black or White Glass front with Graphite Steel rear

ZC Steel

Pages 56 & 58



Graphite front and rear

Balanced Flue Lining Options

Balanced Flue Studios feature a range of stylish lining options which can transform the flame visuals and enhance the fire's aesthetics. See the table opposite for various lining possibilities.



Studio 2 Balanced Flue, Edge with
Log-effect fuel bed and Black Glass Lining



Vermiculite

Black Reeded

Black Glass

Brick Effect

Studio 1, 2 & 3 - Balanced Flue	✓	✓	✓	✗
Studio 22 - Balanced Flue	✓	✗	✗	✗
Studio 1 & 2 Slimline - Balanced Flue	✓	✓	✓	✓
Studio 2 Duplex - Balanced Flue	✓	✓	✗	✗



Studio 1 Balanced Flue



Studio 1 Balanced Flue, Glass frame with Log-effect fuel bed and Black Glass lining



Studio 1 Balanced Flue, Expression frame in Graphite with Pebble & Stone fuel bed and Black Reeded lining

	Efficiency & Heat Output†		Chimney or Flue Options		Gas Type		Fuel Bed			Linings			Control	
	E%	kW	BRICK CHIMNEY	PRE-FABRICATED	BALANCED FLUE	NATURAL GAS	LPG GAS	LOGS	DRIFTWOOD	PEBBLE & STONE	VERMICULITE	BLACK REEDED	BLACK GLASS	PROGRAMMABLE THERMOSTATIC REMOTE
Studio 1 Glass Fronted Balanced Flue	81%	5.10kW	Pg 18	Pg 18	✓	✓	✓	✓	✓	✓	✓	✓	✓	✓

Frame Options
 For the complete selection of frames available with Studio Balanced Flue fires please see pages 36 - 37.

† Efficiency and heat output figures are based upon the maximum achieved in the options available. For more detailed technical information, including firebox dimensions and installation requirements, see pages 77-79.



Studio 1 Balanced Flue, Bauhaus frame in Anthracite with Log-effect fuel bed and Vermiculite Lining



Studio 2 Balanced Flue, Edge+ with Log-effect fuel bed and Black Reeded lining

Studio 2 Balanced Flue



Studio 2 Balanced Flue, Steel 2 frame in Graphite with Driftwood-effect fuel bed and Vermiculite lining



Studio 2 Balanced Flue, Profil frame in Anthracite with Pebble & Stone fuel bed and Black Glass lining

	Efficiency & Heat Output†		Chimney or Flue Options			Gas Type		Fuel Bed			Linings			Control
	E%	kW	BRICK CHIMNEY	PRE-FABRICATED	BALANCED FLUE	NATURAL GAS	LPG GAS	LOGS	DRIFTWOOD	PEBBLE & STONE	VERMICULITE	BLACK REEDED	BLACK GLASS	PROGRAMMABLE THERMOSTATIC REMOTE
Studio 2 Glass Fronted Balanced Flue	81%	6.90kW	Pg 22	Pg 22	✓	✓	✓	✓	✓	✓	✓	✓	✓	✓

Frame Options

For the complete selection of frames available with Studio Balanced Flue fires please see pages 36 - 37.

† Efficiency and heat output figures are based upon the maximum achieved in the options available. For more detailed technical information, including firebox dimensions and installation requirements, see pages 77 - 79.

Studio 3 Balanced Flue



Studio 3 Balanced Flue, Bauhaus frame in Stainless Steel with Driftwood-effect fuel bed and Vermiculite lining



Studio 3 Balanced Flue, Edge+ with Pebble & Stone fuel bed and Black Glass lining

	Efficiency & Heat Output†		Chimney or Flue Options			Gas Type		Fuel Bed			Linings			Control
	E%	kW	BRICK CHIMNEY	PRE-FABRICATED	BALANCED FLUE	NATURAL GAS	LPG GAS	LOGS	DRIFTWOOD	PEBBLE & STONE	VERMICULITE	BLACK REEDED	BLACK GLASS	PROGRAMMABLE THERMOSTATIC REMOTE
Studio 3 Glass Fronted Balanced Flue	81%	8.50kW	Pg 30	Pg 30	✓	✓	✓	✓	✓	✓	✓	✓	✗	✓

Frame Options

For the complete selection of frames available with Studio Balanced Flue fires please see pages 36 - 37.

† Efficiency and heat output figures are based upon the maximum achieved in the options available. For more detailed technical information, including firebox dimensions and installation requirements, see pages 77 - 79.



Studio 3 Balanced Flue, Expression frame in Graphite with Log-effect fuel bed and Black Glass lining

Studio 22 Balanced Flue



Studio 22 Balanced Flue, Profil frame in Anthracite



Studio 22 Balanced Flue, Bauhaus frame in Stainless Steel

	Efficiency & Heat Output†		Chimney or Flue Options			Gas Type		Fuel Bed		Linings				Control
	E%	kW	BRICK CHIMNEY	PRE-FABRICATED	BALANCED FLUE	NATURAL GAS	LPG GAS	LOGS	WHITE STONES	BLACK STEEL	VERMICULITE	BLACK REEDED	BLACK GLASS	PROGRAMMABLE THERMOSTATIC REMOTE
Studio 22 Glass Fronted Balanced Flue	81%	5.85kW	X	X	✓	✓	✓	✓	X	X	✓	X	X	✓

† Efficiency and heat output figures are based upon the maximum achieved in the options available. For more detailed technical information, including firebox dimensions and installation requirements, see page 80.

Frame Options

For the complete selection of frames available with Studio Balanced Flue fires please see pages 36 - 37.



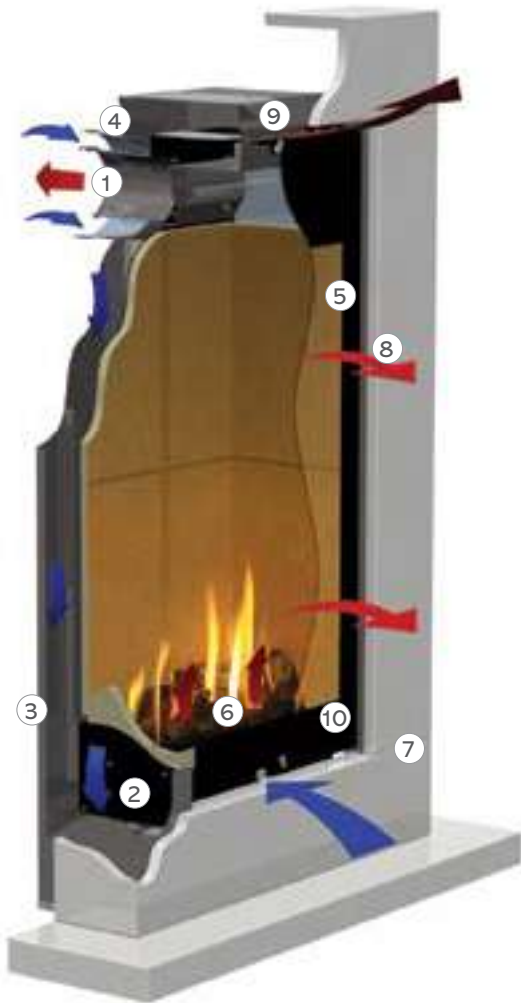
Studio 22 Balanced Flue, Expression frame in Graphite



STUDIO | BALANCED FLUE

Studio 22 Balanced Flue, Sorrento frame in Natural Limestone

Studio 22 Balanced Flue (continued)



Studio 22 Balanced Flue, Steel frame in Graphite



Studio 22 Balanced Flue, Sorrento frame in Graphite Granite

Key Features

1. Balanced Flue connection
2. Shallow firebox depth
3. Semi recessed installation (rear exit only when combined with Sorrento frame)
4. Top or rear flue options for location flexibility
5. Glass Fronted
6. Realistic log-effect fire
7. Choice of frame styles
8. Convected and radiant heat
9. Convected heat system outlet
10. Easy maintenance access
11. Programmable Thermostatic remote control included
12. External battery holder for ease of battery change*
13. Optional mains adaptor*



* Not illustrated

Specifically designed to add vertical presence, the Glass Fronted Studio 22 will instantly become a focal point in any interior, whether installed as a frameless[†] Edge or with one of the many frame options available.

All Studio 22 fires feature a stunning hand-painted log-effect fuel bed and also feature a special heat-retaining Vermiculite lining, adding to the fire's performance and energy efficiency.

For easier installation, the Studio 22 Sorrento stone surround partially houses the fire, reducing the depth of the cavity required for installation to only one course of brickwork.

[†] Frameless refers to added exterior frames, Studio 22 fires have an additional 27mm inner frame that secures the glass window in place.

Studio Slimline

Available in two sizes, these slimmer depth fires have been created to allow an easier, quicker and more cost effective installation option, whilst still retaining all the unmistakable characteristics of the Gazco Studio range.



Studio 2 Slimline Balanced Flue, Profil frame in Graphite with Log-effect fuel bed and Black Glass Lining

The Slimline Benefits



The Glass Fronted Studio Slimline fires have been specifically developed to allow the highly desirable aesthetics of the landscape Studio fires to be achieved in a wider variety of homes by simply recessing into the internal leaf of a cavity wall. Available in two sizes, both come complete with a dedicated rear exit balanced flue termination kit for easy installation - see page 83 for further information. For even more installation possibilities the Monaco surround (see page 60) allows for mounting on to a flat external wall and the Zero Clearance range allows you to install Slimline fires in walls constructed from conventional materials such as studwork and plasterboard (see page 56).

Although compact in design, these highly efficient fires have a generous heat output which is easily controlled with the Programmable Thermostatic remote control.

Key Features

1. Shallow firebox depth of just 155mm
2. Balanced Flue connection
3. Choice of linings
4. Choice of contemporary or realistic fuel effects
5. Choice of frame styles
6. Convected and radiant heat
7. Convected heat system outlet
8. Programmable Thermostatic remote control
9. Rear exit Balanced Flue Termination Kit included*
10. External battery holder for ease of battery change*
11. Optional mains adaptor*



* Not illustrated

Slimline Frame Options

Studio Slimline fires can be styled to your interior with the one of the many high quality frames available, a selection of which are shown on these pages and overleaf. Alternatively, for a minimalist look, the frameless Edge design allows for a striking, hole-in-the-wall installation. For a complete frame style reference please see pages 36-37.

Fuel Effects and Lining Options

To further extend your options for personalisation, there is a choice of four linings and three fuel effects available for the Studio Slimline fires. Each of the lining choices, including contemporary Vermiculite, timeless Black Reeded, classic Brick-effect or depth-enhancing Black Glass can be paired with either realistic logs or contemporary white stone fuel effects. For further styling versatility, the white stones fuel bed can be upgraded to one of three glass bead effects.



Vermiculite Lining

Black Reeded Lining

Brick-effect Lining

Black Glass Lining

With each combination offering a significantly different appearance to the fire, you can be sure to select the perfect combination of fuel effect, lining and frame style to suit your interior decor.



Studio 1 Slimline Balanced Flue, Glass frame with White Stone fuel bed & Black Reeded Lining. Inset: Upgradeable Red, Black & Clear Glass Bead fuel effects.

Studio 1 Slimline Balanced Flue



Studio 1 Slimline Balanced Flue, Expression frame in Graphite with Log-effect fuel bed and Black Glass Lining



Studio 1 Slimline Balanced Flue, Profil frame in Anthracite with White Stone fuel bed and Black Reeded Lining

	Efficiency & Heat Output†		Chimney or Flue Options			Gas Type		Fuel Bed		Linings				Control
	E%	kW	BRICK CHIMNEY	PRE-FABRICATED	BALANCED FLUE	NATURAL GAS	LPG GAS	LOGS	WHITE STONES	BRICK EFFECT	VERMICULITE	BLACK REEDED	BLACK GLASS	PROGRAMMABLE THERMOSTATIC REMOTE
Studio 1 Slimline Balanced Flue	82%	4.30kW	X	X	✓	✓	✓	✓	✓	✓	✓	✓	✓	✓

† Efficiency and heat output figures are based upon the maximum achieved in the options available. For more detailed technical information, including firebox dimensions and installation requirements, see pages 82 - 83.

Frame Options

For the complete selection of frames available with Studio Balanced Flue fires please see pages 36 - 37.



Studio 1 Slimline Balanced Flue, Verve Frame in Graphite with Log-effect fuel bed and Brick-effect Lining



Studio 2 Slimline Balanced Flue, Edge with Log-effect fuel bed and Black Glass Lining

Studio 2 Slimline Balanced Flue



Studio 2 Slimline Balanced Flue, Steel2 Frame in Graphite with Log-effect fuel bed and Brick-effect Lining



Studio 2 Slimline Balanced Flue, Bauhaus Frame in Polished Stainless Steel with Log-effect fuel bed and Vermiculite Lining

	Efficiency & Heat Output†		Chimney or Flue Options			Gas Type		Fuel Bed		Linings				Control
	E%	kW	BRICK CHIMNEY	PRE-FABRICATED	BALANCED FLUE	NATURAL GAS	LPG GAS	LOGS	WHITE STONES	BRICK EFFECT	VERMICULITE	BLACK REEDED	BLACK GLASS	PROGRAMMABLE THERMOSTATIC REMOTE
Studio 2 Slimline Balanced Flue	82%	5.41kW	X	X	✓	✓	✓	✓	✓	✓	✓	✓	✓	✓

† Efficiency and heat output figures are based upon the maximum achieved in the options available. For more detailed technical information, including firebox dimensions and installation requirements, see pages 82 - 83.

Frame Options

For the complete selection of frames available with Studio Balanced Flue fires please see pages 36 - 37.

Studio Slimline Zero Clearance Range

Studio 1 Slimline Balanced Flue, ZC Steel frame in Graphite with Log-effect fuel bed and Black Reeded Lining



New Studio Slimline Zero Clearance frame kits increase your installation possibilities around the home by allowing for simpler and easier fitting of Slimline fires into existing walls.

Unlike many gas fires, the Slimline Zero Clearance range does not need a specially constructed non-combustible wall to house the appliance. The Zero Clearance Frame kit includes an enclosure that houses the fire and circulates air around the appliance, reducing the heat transferred to the installation wall by directing it back into the room.

This means you can choose to fit your Slimline fire into walls with standard plasterboard and stud-work thanks to the Zero Clearance kit's ability to keep wall temperatures to a minimum. Zero Clearance Slimline fires are available in both Studio 1 and 2 Sizes

Key Features

1. Zero clearance box enclosure to reduce wall temperatures (included with frame)
2. Shallow firebox depth of just 155mm
3. Balanced flue connection
4. Choice of linings
5. Choice of contemporary or realistic fuel effects
6. Choice of new Zero clearance box frame styles
7. Convected and radiant heat system
8. Convected heat system outlet
9. Programmable Thermostatic remote control
10. Rear exit balanced flue termination kit included*
11. External battery holder for ease of battery change*
12. Optional mains adaptor*

* Not illustrated



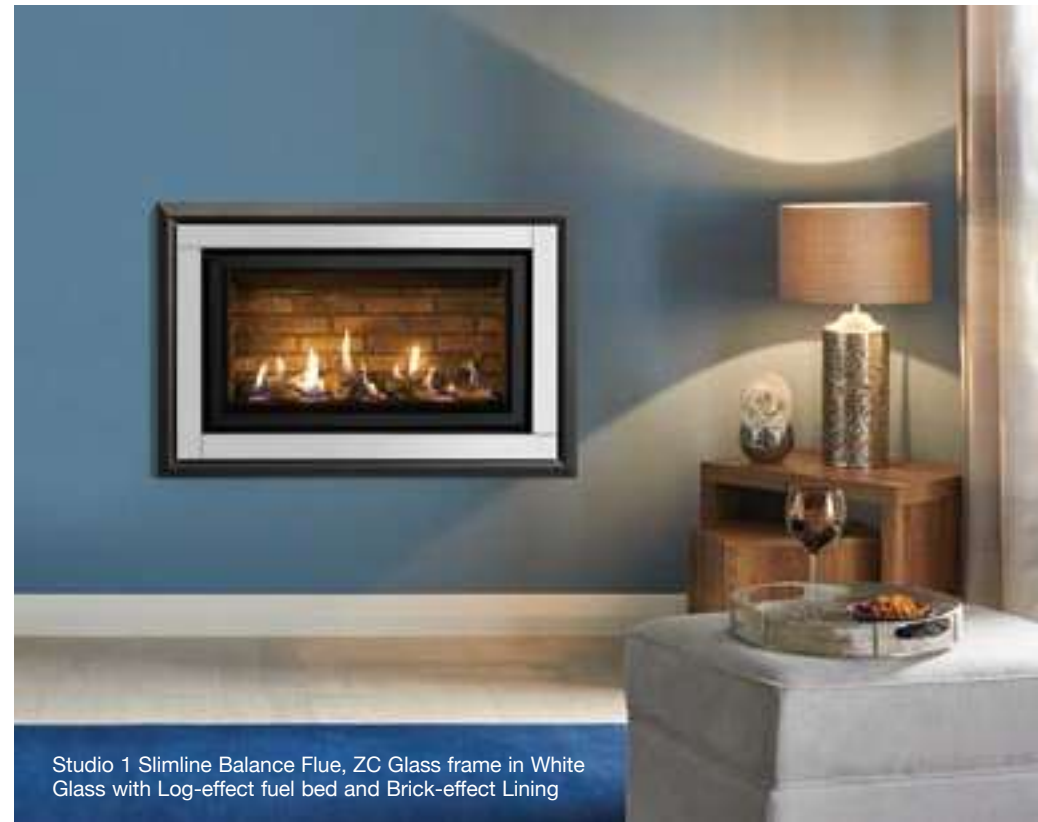


Studio 2 Slimline Balanced Flue, ZC Glass frame in Black Glass with Log-effect fuel bed and Vermiculite Lining

Studio Slimline Zero Clearance Range (continued)



Studio 2 Slimline Balanced Flue, ZC Steel frame in Graphite with Log-effect fuel bed and Black Glass Lining



Studio 1 Slimline Balance Flue, ZC Glass frame in White Glass with Log-effect fuel bed and Brick-effect Lining

Slimline Zero Clearance Frames offer unique, eye-catching and functional styling options. Cleverly designed to not only enhance the look of your fire, each frame also allows cool air to be drawn from the room and around the Zero Clearance enclosure. The air is then heated and convected back into the room, reducing the surrounding wall temperatures.

Frame options are available in two, specifically designed frame styles exclusive to the Zero Clearance Slimline range. Choose from ZC Steel in a Graphite finish or ZC Glass in a choice of either White Glass or Black Glass, both providing an exceptional finish that completely covers the fire's installation edge whilst creating a stylish focal point.

Studio 2 Slimline Balanced Flue, ZC Glass frame in Black Glass with Log-effect fuel bed and Brick-effect Lining



STUDIO | BALANCED FLUE

Studio Slimline Monaco Surround

Creating a stunning, contemporary centrepiece in your home, the Monaco surround for the Studio Slimline 1 is specifically designed for mounting the fire to a flat external wall and makes a statement wherever it is located. The Monaco's neat design means you can add the Slimline 1 fire to your living area without having to create a cavity in an existing wall, ensuring no additional building work is required to install the fire.

Thanks to its versatile design, the Monaco lets you tailor your fire surround to suit your tastes. With its modular construction, the surround can be assembled with the Slimline 1 fire positioned centrally or offset to the left or right. For added presence, you can increase the height either above or below the fire by adding an optional surround extension piece - letting you choose exactly how your Slimline Monaco will look in your home.

Offering further styling possibilities, the Monaco is supplied in a stunning unfinished concrete for minimalist elegance but can be easily painted with water based paints to suit your interior. Featuring a recessed storage plinth, the surround can also be visually enhanced with pre-cut logs for the natural feel of a woodburning fire.

Key Features and Possible Configurations



1. Glass reinforced concrete surround
2. Choice of central or offset fire positioning
3. Black Granite top†
4. Integrated storage plinth
5. Shallow firebox depth of just 155mm
6. Balanced flue connection
7. Choice of linings
8. Choice of contemporary or realistic fuel effects
9. Convected and radiant heat system
10. Convected heat system outlet
11. Programmable Thermostatic remote control
12. Optional extension piece*
13. Rear exit balanced flue termination kit included *
14. External battery holder for ease of battery change*
15. Optional mains adaptor*

* Not illustrated



Monaco with left aligned fire



Monaco with right aligned fire



Monaco with extension above centrally aligned fire



Monaco with extension below right aligned fire



Monaco with extension above left aligned fire

Δ Dimensions given are those overall visible upon installation. For more detailed technical information, including firebox dimensions and installation requirements, please see pages 82 - 83.

† Granite is a naturally occurring material and may exhibit subtle variations in colour and shade. The Black Granite top will become hot during use and is therefore unsuitable for placing objects on or using as a mantel.





Studio Duplex

For a truly awe-inspiring focal point in your home, the high efficiency, double-sided Duplex fire offers the ultimate solution to stylish dual space heating.

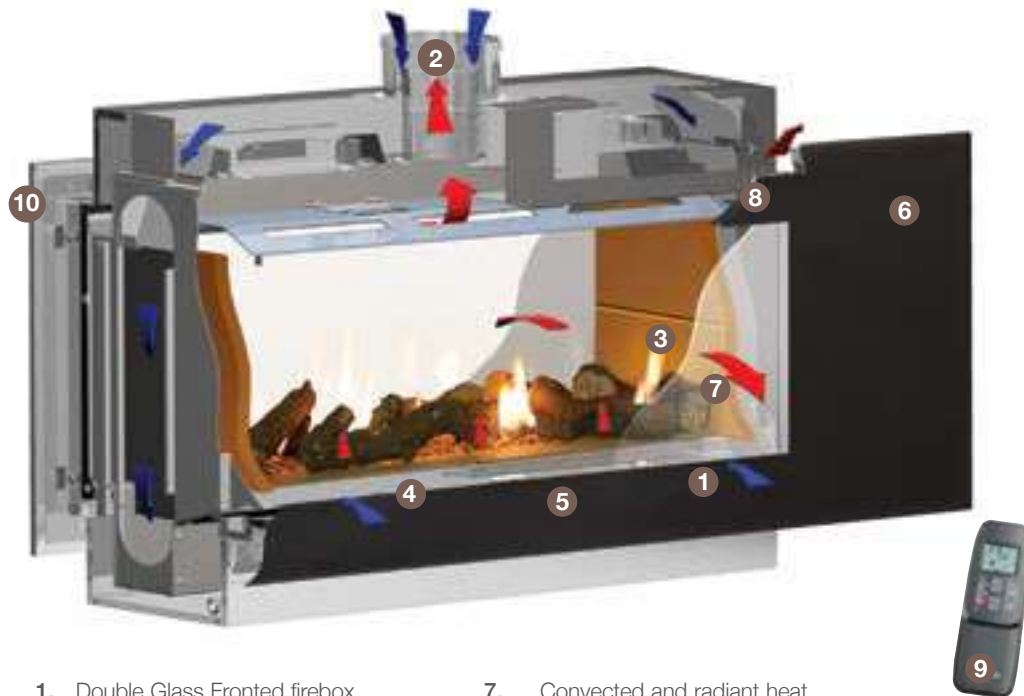


Studio 2 Duplex Balanced Flue, Glass frame with Log-effect fuel bed and Vermiculite lining

The Duplex Benefits

The Glass Fronted Studio 2 Duplex offers the unique installation possibility of locating the fire between two separate living areas, allowing the stunning flames and 7.9kW heat output to be appreciated from both sides. Featuring a hand finished, highly realistic, log-effect fuel bed and glowing ember bed, this innovative gas fire effortlessly creates warming, woodburning ambience at the touch of a button.

Key Features



- | | |
|------------------------------------|---|
| 1. Double Glass Fronted firebox | 7. Convected and radiant heat |
| 2. Balanced Flue connection | 8. Convected heat system outlet |
| 3. Choice of linings | 9. Programmable Thermostatic remote control |
| 4. Realistic log-effect fire | 10. Dual styling options |
| 5. Realistic Glowing ember feature | 11. External battery holder for ease of battery change* |
| 6. Wide choice of frame styles | 12. Optional mains adaptor* |

*Not Illustrated

Lining Options



Vermiculite Lining



Black Reeded Lining

To further extend your options for personalisation, the Duplex offers a choice of linings, each providing a distinctly different look for your fire. The Vermiculite linings complement the hand-painted logs and boost the light appeal of the glowing fire. The Black Reeded linings however, provide a striking and contrasting backdrop that really serves to display the beautiful flames to their fullest potential.

Duplex Frame Options

The Studio 2 Duplex has the benefit of dual styling possibilities, allowing you to select a different look for either side of the fire. Whether opting for a minimalist, hole-the-wall Edge installation or a glass or steel frame, there is a selection of styles that will attract the eye and enhance your two interior spaces. A selection of frame choices are shown overleaf, however a complete guide to all available options is shown on pages 36 - 37.

Studio 2 Duplex Balanced Flue



Studio 2 Duplex Balanced Flue, Profil frame in Anthracite with log-effect fuel bed and Vermiculite lining



Studio 2 Duplex Balanced Flue, Edge with log-effect fuel bed and Black Reeded lining

	Efficiency & Heat Output†		Chimney or Flue Options			Gas Type		Fuel Bed		Linings			Control	
	E%	kW	BRICK CHIMNEY	PRE-FABRICATED	BALANCED FLUE	NATURAL GAS	LPG GAS	LOGS	WHITE STONES	BRICK EFFECT	VERMICULITE	BLACK REEDED	BLACK GLASS	PROGRAMMABLE THERMOSTATIC REMOTE
Studio 2 Duplex Balanced Flue	82%	7.90kW	X	X	✓	✓	✓	✓	X	X	✓	✓	X	✓

† Efficiency and heat output figures are based upon the maximum achieved in the options available. For more detailed technical information, including firebox dimensions and installation requirements, see page 80.

Frame Options

For the complete selection of frames available with Studio Balanced Flue fires please see pages 36 - 37.



Studio 1 Freestanding Balanced Flue



Studio 1 Freestanding Balanced Flue with White front and plinth and Pebble & Stone fuel bed and Black Glass lining



Studio 1 Freestanding Balanced Flue with Black front and plinth, Driftwood-effect fuel bed and Vermiculite lining

	Efficiency & Heat Output†		Chimney or Flue Options			Gas Type		Fuel Bed			Linings			Control
	E%	kW	BRICK CHIMNEY	PRE-FABRICATED	BALANCED FLUE	NATURAL GAS	LPG GAS	LOGS	DRIFTWOOD	PEBBLE & STONE	VERMICULITE	BLACK REEDED	BLACK GLASS	PROGRAMMABLE THERMOSTATIC REMOTE
Studio 1 Freestanding Balanced Flue	81%	5.10kW	Pg 26	Pg 26	✓	✓	✓	✓	✓	✓	✓	✓	✓	✓

† Efficiency and heat output figures are based upon the maximum achieved in the options available. For more detailed technical information, including firebox dimensions and installation requirements, see pages 84 - 85.

Mounting Options

Studio Freestanding fires can be selected with a curved Plinth or Bench mount in either matching white or black finishes.



Studio 1 Freestanding Balanced Flue with White front and bench, Log-effect fuel bed and Black Reeded lining



Studio 2 Freestanding Balanced Flue with White front and bench and Pebble & Stone fuel bed and Black Glass lining.

Studio 2 Freestanding Balanced Flue



Studio 2 Freestanding Balanced Flue with Black front and plinth, Log-effect fuel bed and Vermiculite lining



Studio 2 Freestanding Balanced Flue with Black front and bench, Driftwood-effect fuel bed and Black Reeded lining

	Efficiency & Heat Output†		Chimney or Flue Options			Gas Type		Fuel Bed			Linings			Control
	E%	kW	BRICK CHIMNEY	PRE-FABRICATED	BALANCED FLUE	NATURAL GAS	LPG GAS	LOGS	DRIFTWOOD	PEBBLE & STONE	VERMICULITE	BLACK REEDED	BLACK GLASS	PROGRAMMABLE THERMOSTATIC REMOTE
Studio 2 Freestanding Balanced Flue	81%	6.90kW	Pg 28	Pg 28	✓	✓	✓	✓	✓	✓	✓	✓	✓	✓

† Efficiency and heat output figures are based upon the maximum achieved in the options available. For more detailed technical information, including firebox dimensions and installation requirements, see pages 84 - 85.

Mounting Options

Studio Freestanding fires can be selected with a curved Plinth or Bench mount in either matching white or black finishes.

Studio Coloured Frame Options



Studio 22 Balanced Flue, Steel frame in Metallic Red with Log-effect fuel bed and Vermiculite lining



Studio 2 Conventional Flue, Bauhaus frame in Metallic Bronze, with Driftwood-effect fuel bed and Black Glass lining

For those that want to add a splash of colour to their living space, Gazco offer three vibrant colour options specifically designed to complement the stylish, contemporary form of many of our modern fire frames.

Choose from three eye-catching colours including: Metallic Red, Metallic Bronze and Ivory. Please use the product code for the relevant frame of your choice, with the following suffix for your chosen colour: Metallic Red (RD) • Metallic Bronze (BZ) • Ivory (IV) For example: Studio 1 Open Fronted Profil in Metallic Red = 8710ANRD

The colours shown on this page are available for the following frames: Profil, Bauhaus, Expression, Steel 2 and Verve



Studio 2 Conventional Flue, Profil frame in Ivory, with Log-effect fuel bed and Vermiculite lining

Studio Summary

Diverse and versatile, the Studio fire range offers numerous possibilities from stylish frames and lining options to installations without a chimney.



	Open Fronted Studio Fires			Glass Fronted Studio Fires					Glass Fronted Studio 22	Glass Fronted Studio Slimline		Glass Fronted Studio 2 Duplex	Glass Fronted Studio Freestanding			
																
	Studio 1 CF	Studio 2 CF	Studio 3 CF	Studio 1 CF	Studio 1 BF	Studio 2 CF	Studio 2 BF	Studio 3 BF	Studio 22 BF	Slimline 1 BF	Slimline 2 BF	Studio 2 Duplex BF	Freestanding 1 CF	Freestanding 1 BF	Freestanding 2 CF	Freestanding 2 BF
Choice of Fuel Bed:																
Log-effect	X	X	X	✓	✓	✓	✓	✓	✓	✓	✓	✓	✓	✓	✓	✓
Driftwood-effect	X	X	X	✓	✓	✓	✓	✓	X	X	X	X	✓	✓	✓	✓
Pebble & Stone	X	X	X	✓	✓	✓	✓	✓	X	X	X	X	✓	✓	✓	✓
White Stone	✓	✓	✓	X	X	X	X	X	X	✓	✓	X	X	X	X	X
Coloured Glass Beads	✓	✓	✓	X	X	X	X	X	X	✓	✓	X	X	X	X	X
Installation Type:																
Hearth Mounted Installation	X	X	X	X	X	X	X	X	✓	X	X	X	✓	✓	✓	✓
Wall Installation	✓	✓	✓	✓	✓	✓	✓	✓	✓	✓	✓	✓	X	X	X	X
Cavity Wall Specific Fire	X	X	X	X	X	X	X	X	✓ [◇]	✓	✓	X	X	X	X	X
Double Sided Fire	X	X	X	X	X	X	X	X	X	X	X	✓	X	X	X	X
Key Features:																
Remote Control	✓	✓	✓	✓	✓	✓	✓	✓	✓	✓	✓	✓	✓	✓	✓	✓
Timer and Thermostat Programmable	X	X	X	✓	✓	✓	✓	✓	✓	✓	✓	✓	✓	✓	✓	✓
Glass Fronted High Efficiency	X	X	X	✓	✓	✓	✓	✓	✓	✓	✓	✓	✓	✓	✓	✓
Ambient Open Fire	✓	✓	✓	X	X	X	X	X	X	X	X	X	X	X	X	X
Natural Gas or LPG	✓	✓	✓	✓	✓	✓	✓	✓	✓	✓	✓	✓	✓	✓	✓	✓
Choice of Linings	✓	✓	✓	✓	✓	✓	✓	✓	X	✓	✓	✓	✓	✓	✓	✓
Wide Selection of Frames	✓	✓	✓	✓	✓	✓	✓	✓	✓	✓	✓	✓	X	X	X	X
Frameless 'Edge' Option	✓	✓	✓	✓	✓	✓	✓	✓	✓	✓	✓	✓	X	X	X	X
Conventional Flue ODS safety device*	✓	✓	✓	✓	n/a	✓	n/a	n/a	n/a	n/a	n/a	n/a	✓	n/a	✓	n/a
Balanced Flue Firebox Relief Venting System ^Δ	n/a	n/a	n/a	n/a	✓	n/a	✓	✓	✓	✓	✓	✓	n/a	✓	n/a	✓
Additional air vent required	X	✓	✓	X	X	✓	X	X	X	X	X	X	X	X	✓	X
Conventional Flue	✓	✓	✓	✓	X	✓	X	X	X	X	X	X	✓	X	✓	X
Balanced Flue	X	X	X	X	✓	X	✓	✓	✓	✓	✓	✓	X	✓	X	✓
Maximum Heat Output	1.72kW	2.30kW	3.40kW	4.97kW	5.20kW	6.89kW	6.97kW	7.30kW	5.85kW	4.25kW	5.00kW	7.90kW	4.97kW	5.20kW	6.89kW	6.97kW
Maximum Efficiency	25%	25%	25%	72%	81%	81%	81%	81%	78%	82%	82%	82%	72%	81%	81%	81%

* ODS (Oxygen Depletion Sensor) - This Conventional Flue safety feature will shut off the gas supply to the burner in the event of a reduction to oxygen levels in the room.

Δ All Gazco Balanced Flue fires have relief vents in the firebox ensuring compliance with EN 613:2001 for delayed ignition safety standards

◇ When installed with a Sorrento surround - see page 48

Technical Information

The following pages provide the dimensional, heat input/output, efficiency and product code information you will need to choose your new Gazco fire. For more detailed specifications, please consult your Gazco retailer. Complete installation instructions may be downloaded from www.gazco.com.



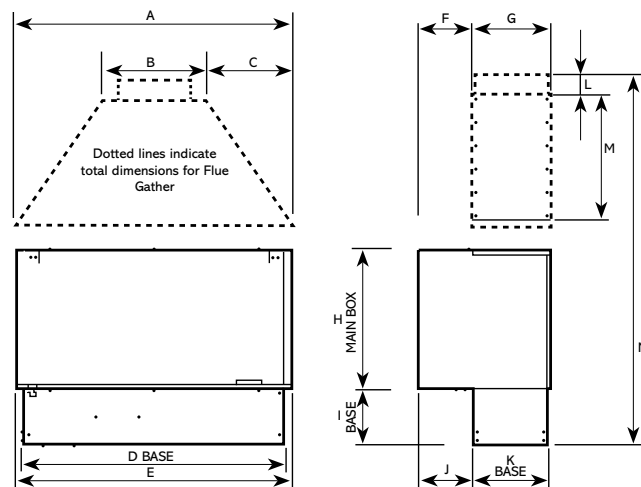
Studio 1, 2 & 3 Open Fronted Fire Information

OPEN FRONTED FIRES

Product Code	Description	Flue Type	Gas Type	Fuel Effect	Heat Input	Heat Output	Efficiency	Remote Control	Lining
⊗ 8700CHEC	Studio 1	Conventional	Nat. Gas	White Stones	6.90kW	1.72kW	25%	Standard	N/A
⊗ P8700CHEC	Studio 1	Conventional	LPG	White Stones	6.90kW	1.72kW	25%	Standard	N/A
8701CHEC	Studio 2	Conventional	Nat. Gas	White Stones	8.80kW	2.20kW	25%	Standard	N/A
P8701CHEC	Studio 2	Conventional	LPG	White Stones	9.30kW	2.30kW	25%	Standard	N/A
8702CHEC	Studio 3	Conventional	Nat. Gas	White Stones	13.20kW	3.30kW	25%	Standard	N/A
P8702CHEC	Studio 3	Conventional	LPG	White Stones	13.70kW	3.40kW	25%	Standard	N/A

Additional Information (mm)

Appliance dimensions (mm)



Dimension		Studio 1	Studio 2	Studio 3
A	Gather width	664	864	1254
B	Gather top	250	250	325
C	Gather taper	207	307	465
D	Base width	635	835	1225
E**	Box width	660	860	1250
F	Max. lintel width	130	130	130
G	Gather depth	187	187	187
H**	Box height	334	334	334
I*	Base height	133	133	133
J	Base depth	130	130	130
K	Base	182	182	182
L	Spigot height	50	50	50
M	Gather height	300	300	700
N	Total height	817	817	1217

* adjustable feet can increase base height by up to 235 mm

** If installed with one of the Studio frames, a 5mm space must be left around the front edge of the appliance.

CHIMNEY TYPES

Studio 1

- **Class 1 brick built flue**
 - Can be fitted without the optional flue gather if the chimney is sound.
 - If the optional gather is used, then it must be connected to a 7" flexible flue liner suitable for gas.
- **Pre-fabricated 7" twin wall flue system suitable for gas**
 - Must be fitted with the optional flue gather.

Studio 2 and 3

- **Class 1 brick built flue**
 - Must be fitted with the flue gather.
- **Pre-fabricated 7" twin wall flue system suitable for gas**
 - Must be fitted with the flue gather.

Note: it is possible to install the Studio 2 and 3 into a Class 1 brick flue. However, this type of installation should only be undertaken by chimney specialists. This is because it will require the front wall and structure of the chimney breast to be extensively cut away to allow enough width to fit the fire and also provide access to the top of the gather to allow either

- Connection of a 7" flexible flue liner suitable for gas
- Creation of a smooth transition between the top of the gather and the flue



Installing Televisions above Open Fronted Studio Fires

On a normal flue which is functioning correctly, Open Fronted Studios do not create a particularly hot environment on the wall above where they are installed. Therefore, it may be possible to install Plasma or LCD TV's above them, as long as the distance to the TV is a minimum of 450mm from the top of the fire and as long as it has been checked with the TV manufacturer's installation instructions with regard to installation and heat proximity. If in doubt please contact and check with your TV manufacturer.

Glass Fronted Studio Fires Gazco does not recommend installation of televisions above Glass Fronted Studio fires.

Studio 1 & 2 Glass Fronted Fires - Conventional Flue

Supplied with Programmable Thermostatic Remote

STUDIO 1 - CONVENTIONAL FLUE

Product Code	Fire Size	Flue Type	Gas Type	Fuel Effect	Heat Input	Heat Output	Efficiency	Lining
⊗ 123-104	Studio 1	CF	Nat. Gas	Logs	6.30kW	4.54kW	72%	Vermiculite
⊗ 123-457	Studio 1	CF	LPG	Logs	6.90kW	4.97kW	72%	Vermiculite
⊗ 123-051	Studio 1	CF	Nat. Gas	Logs	6.30kW	4.54kW	72%	Black Reeded
⊗ 123-408	Studio 1	CF	LPG	Logs	6.90kW	4.97kW	72%	Black Reeded
⊗ 123-154	Studio 1	CF	Nat. Gas	Logs	6.30kW	4.54kW	72%	Black Glass
⊗ 123-503	Studio 1	CF	LPG	Logs	6.90kW	4.97kW	72%	Black Glass
⊗ 123-274	Studio 1	CF	Nat. Gas	Pebble & Stone	6.30kW	4.54kW	72%	Vermiculite
⊗ 123-577	Studio 1	CF	LPG	Pebble & Stone	6.90kW	4.97kW	72%	Vermiculite
⊗ 123-271	Studio 1	CF	Nat. Gas	Pebble & Stone	6.30kW	4.54kW	72%	Black Reeded
⊗ 123-400	Studio 1	CF	LPG	Pebble & Stone	6.90kW	4.97kW	72%	Black Reeded
⊗ 123-186	Studio 1	CF	Nat. Gas	Pebble & Stone	6.30kW	4.54kW	72%	Black Glass
⊗ 123-711	Studio 1	CF	LPG	Pebble & Stone	6.90kW	4.97kW	72%	Black Glass
⊗ 123-210	Studio 1	CF	Nat. Gas	Driftwood	6.30kW	4.54kW	72%	Vermiculite
⊗ 123-555	Studio 1	CF	LPG	Driftwood	6.90kW	4.97kW	72%	Vermiculite
⊗ 123-002	Studio 1	CF	Nat. Gas	Driftwood	6.30kW	4.54kW	72%	Black Reeded
⊗ 123-404	Studio 1	CF	LPG	Driftwood	6.90kW	4.97kW	72%	Black Reeded
⊗ 123-136	Studio 1	CF	Nat. Gas	Driftwood	6.30kW	4.54kW	72%	Black Glass
⊗ 123-609	Studio 1	CF	LPG	Driftwood	6.90kW	4.97kW	72%	Black Glass

STUDIO 2 - CONVENTIONAL FLUE

123-111	Studio 2	CF	Nat. Gas	Logs	8.50kW	6.90kW	81%	Vermiculite
123-466	Studio 2	CF	LPG	Logs	8.50kW	6.90kW	81%	Vermiculite
123-068	Studio 2	CF	Nat. Gas	Logs	8.50kW	6.90kW	81%	Black Reeded
123-414	Studio 2	CF	LPG	Logs	8.50kW	6.90kW	81%	Black Reeded
123-161	Studio 2	CF	Nat. Gas	Logs	8.50kW	6.90kW	81%	Black Glass
123-510	Studio 2	CF	LPG	Logs	8.50kW	6.90kW	81%	Black Glass
123-288	Studio 2	CF	Nat. Gas	Pebble & Stone	8.50kW	6.90kW	81%	Vermiculite
123-618	Studio 2	CF	LPG	Pebble & Stone	8.50kW	6.90kW	81%	Vermiculite
123-219	Studio 2	CF	Nat. Gas	Pebble & Stone	8.50kW	6.90kW	81%	Black Reeded
123-417	Studio 2	CF	LPG	Pebble & Stone	8.50kW	6.90kW	81%	Black Reeded
123-355	Studio 2	CF	Nat. Gas	Pebble & Stone	8.50kW	6.90kW	81%	Black Glass
123-763	Studio 2	CF	LPG	Pebble & Stone	8.50kW	6.90kW	81%	Black Glass
123-378	Studio 2	CF	Nat. Gas	Driftwood	8.50kW	6.90kW	81%	Vermiculite
123-526	Studio 2	CF	LPG	Driftwood	8.50kW	6.90kW	81%	Vermiculite
123-037	Studio 2	CF	Nat. Gas	Driftwood	8.50kW	6.90kW	81%	Black Reeded
123-455	Studio 2	CF	LPG	Driftwood	8.50kW	6.90kW	81%	Black Reeded
123-323	Studio 2	CF	Nat. Gas	Driftwood	8.50kW	6.90kW	81%	Black Glass
123-627	Studio 2	CF	LPG	Driftwood	8.50kW	6.90kW	81%	Black Glass

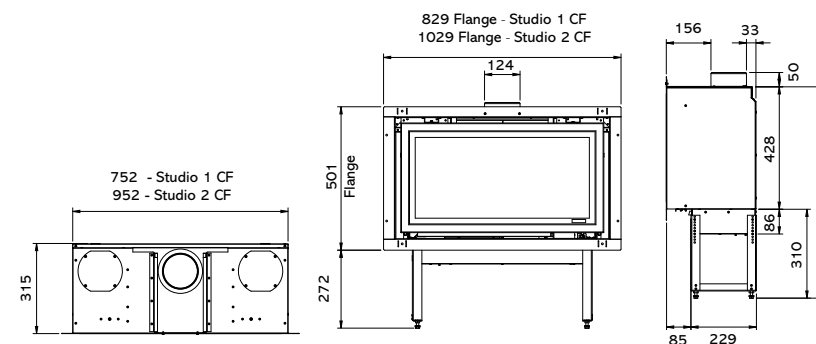
Additional Information

Conventional Flue Installation

The conventionally flued Glass Fronted Studio has been designed with ease of installation in mind and can be installed two ways:

- 1) Direct connection to a 5" flue liner or 5" twin wall gas vent system
- 2) No additional fluing is needed when it is installed into an existing builders opening below a masonry chimney and sealed to the fireplace opening (assuming that the chimney is of sound construction).

Glass Fronted, Conventional Flue Studio Dimensions (mm)



Studio 1, 2 & 3 Glass Fronted Fires - Balanced Flue

Supplied with Programmable Thermostatic Remote

STUDIO 1 - BALANCED FLUE

Product Code	Fire Size	Flue Type	Gas Type	Fuel Effect	Heat Input	Heat Output	Efficiency	Lining
⊗ 123-125	Studio 1	BF	Nat. Gas	Logs	6.30kW	5.10kW	81%	Vermiculite
⊗ 123-479	Studio 1	BF	LPG	Logs	6.30kW	5.10kW	81%	Vermiculite
⊗ 123-073	Studio 1	BF	Nat. Gas	Logs	6.30kW	5.10kW	81%	Black Reeded
⊗ 123-423	Studio 1	BF	LPG	Logs	6.30kW	5.10kW	81%	Black Reeded
⊗ 123-178	Studio 1	BF	Nat. Gas	Logs	6.30kW	5.10kW	81%	Black Glass
⊗ 123-516	Studio 1	BF	LPG	Logs	6.30kW	5.10kW	81%	Black Glass
⊗ 123-362	Studio 1	BF	Nat. Gas	Pebble & Stone	6.30kW	5.10kW	81%	Vermiculite
⊗ 123-702	Studio 1	BF	LPG	Pebble & Stone	6.30kW	5.10kW	81%	Vermiculite
⊗ 123-314	Studio 1	BF	Nat. Gas	Pebble & Stone	6.30kW	5.10kW	81%	Black Reeded
⊗ 123-428	Studio 1	BF	LPG	Pebble & Stone	6.30kW	5.10kW	81%	Black Reeded
⊗ 123-390	Studio 1	BF	Nat. Gas	Pebble & Stone	6.30kW	5.10kW	81%	Black Glass
⊗ 123-776	Studio 1	BF	LPG	Pebble & Stone	6.30kW	5.10kW	81%	Black Glass
⊗ 123-394	Studio 1	BF	Nat. Gas	Driftwood	6.30kW	5.10kW	81%	Vermiculite
⊗ 123-471	Studio 1	BF	LPG	Driftwood	6.30kW	5.10kW	81%	Vermiculite
⊗ 123-113	Studio 1	BF	Nat. Gas	Driftwood	6.30kW	5.10kW	81%	Black Reeded
⊗ 123-531	Studio 1	BF	LPG	Driftwood	6.30kW	5.10kW	81%	Black Reeded
⊗ 123-061	Studio 1	BF	Nat. Gas	Driftwood	6.30kW	5.10kW	81%	Black Glass
⊗ 123-496	Studio 1	BF	LPG	Driftwood	6.30kW	5.10kW	81%	Black Glass

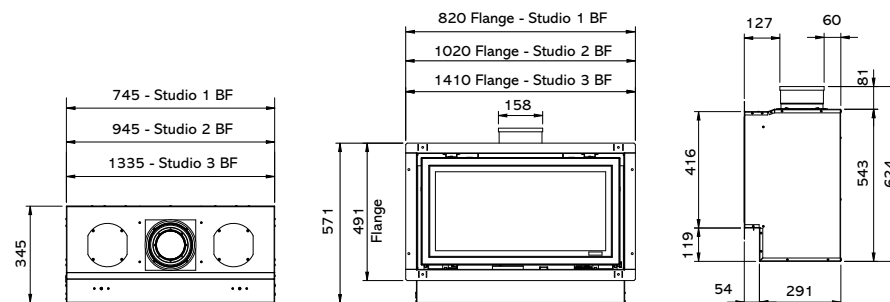
STUDIO 2 - BALANCED FLUE

⊗ 123-133	Studio 2	BF	Nat. Gas	Logs	8.50kW	6.90kW	81%	Vermiculite
⊗ 123-482	Studio 2	BF	LPG	Logs	8.00kW	6.50kW	81%	Vermiculite
⊗ 123-085	Studio 2	BF	Nat. Gas	Logs	8.50kW	6.90kW	81%	Black Reeded
⊗ 123-435	Studio 2	BF	LPG	Logs	8.00kW	6.50kW	81%	Black Reeded
⊗ 123-189	Studio 2	BF	Nat. Gas	Logs	8.50kW	6.90kW	81%	Black Glass
⊗ 123-524	Studio 2	BF	LPG	Logs	8.00kW	6.50kW	81%	Black Glass
⊗ 123-242	Studio 2	BF	Nat. Gas	Pebble & Stone	8.50kW	6.90kW	81%	Vermiculite
⊗ 123-734	Studio 2	BF	LPG	Pebble & Stone	8.00kW	6.50kW	81%	Vermiculite
⊗ 123-336	Studio 2	BF	Nat. Gas	Pebble & Stone	8.50kW	6.90kW	81%	Black Reeded
⊗ 123-440	Studio 2	BF	LPG	Pebble & Stone	8.00kW	6.50kW	81%	Black Reeded
⊗ 123-301	Studio 2	BF	Nat. Gas	Pebble & Stone	8.50kW	6.90kW	81%	Black Glass
⊗ 123-781	Studio 2	BF	LPG	Pebble & Stone	8.00kW	6.50kW	81%	Black Glass
⊗ 123-233	Studio 2	BF	Nat. Gas	Driftwood	8.50kW	6.90kW	81%	Vermiculite
⊗ 123-588	Studio 2	BF	LPG	Driftwood	8.00kW	6.50kW	81%	Vermiculite
⊗ 123-282	Studio 2	BF	Nat. Gas	Driftwood	8.50kW	6.90kW	81%	Black Reeded
⊗ 123-793	Studio 2	BF	LPG	Driftwood	8.00kW	6.50kW	81%	Black Reeded
⊗ 123-291	Studio 2	BF	Nat. Gas	Driftwood	8.50kW	6.90kW	81%	Black Glass
⊗ 123-644	Studio 2	BF	LPG	Driftwood	8.00kW	6.50kW	81%	Black Glass

STUDIO 3 - BALANCED FLUE

Product Code	Fire Size	Flue Type	Gas Type	Fuel Effect	Heat Input	Heat Output	Efficiency	Lining
⊗ 123-140	Studio 3	BF	Nat. Gas	Logs	10.10kW	8.20kW	81%	Vermiculite
⊗ 123-490	Studio 3	BF	LPG	Logs	10.50kW	8.50kW	81%	Vermiculite
⊗ 123-096	Studio 3	BF	Nat. Gas	Logs	10.10kW	8.20kW	81%	Black Reeded
⊗ 123-448	Studio 3	BF	LPG	Logs	10.50kW	8.50kW	81%	Black Reeded
⊗ 123-197	Studio 3	BF	Nat. Gas	Logs	10.10kW	8.20kW	81%	Black Glass
⊗ 123-538	Studio 3	BF	LPG	Logs	10.50kW	8.50kW	81%	Black Glass
⊗ 123-369	Studio 3	BF	Nat. Gas	Pebble & Stone	10.10kW	8.20kW	81%	Vermiculite
⊗ 123-659	Studio 3	BF	LPG	Pebble & Stone	10.50kW	8.50kW	81%	Vermiculite
⊗ 123-349	Studio 3	BF	Nat. Gas	Pebble & Stone	10.10kW	8.20kW	81%	Black Reeded
⊗ 123-564	Studio 3	BF	LPG	Pebble & Stone	10.50kW	8.50kW	81%	Black Reeded
⊗ 123-087	Studio 3	BF	Nat. Gas	Pebble & Stone	10.10kW	8.20kW	81%	Black Glass
⊗ 123-796	Studio 3	BF	LPG	Pebble & Stone	10.50kW	8.50kW	81%	Black Glass
⊗ 123-058	Studio 3	BF	Nat. Gas	Driftwood	10.10kW	8.20kW	81%	Vermiculite
⊗ 123-799	Studio 3	BF	LPG	Driftwood	10.50kW	8.50kW	81%	Vermiculite
⊗ 123-019	Studio 3	BF	Nat. Gas	Driftwood	10.10kW	8.20kW	81%	Black Reeded
⊗ 123-685	Studio 3	BF	LPG	Driftwood	10.50kW	8.50kW	81%	Black Reeded
⊗ 123-129	Studio 3	BF	Nat. Gas	Driftwood	10.10kW	8.20kW	81%	Black Glass
⊗ 123-737	Studio 3	BF	LPG	Driftwood	10.50kW	8.50kW	81%	Black Glass

Glass Fronted, Balanced Flue* Studio Dimensions (mm)



* For more Balanced Flue information and options please refer to our Concentric Flue System brochure which can be viewed or downloaded online at www.gazco.com

Studio 1, 2 & 3 Frame Information

Description	Frame Finish	Open Fronted Product Code	Frame Size (mm)			Glass Fronted CF Product Code	Frame Size (mm)			Glass Fronted BF Product Code	Frame Size (mm)		
			w	h	d		w	h	d		w	h	d
STUDIO 1													
Bauhaus	Anthracite	8711AN	764	439	28	8711CFAN01	860	534	28	8711BFAN01	850	524	28
Bauhaus	Polished Stainless Steel	8711P	764	439	28	8711CFSS01	860	534	28	8711BFSS01	850	524	28
Profil	Anthracite	8710AN	750	426	13	8710CFAN01	846	520	13	8710BFAN01	836	510	13
Profil	Polished Stainless Steel	8710P	750	426	13	8710CFSS01	846	520	13	8710BFSS01	836	510	13
Steel 2	Graphite	923-486	1118	478	13	923-883	1264	528	27	923-883	1264	528	27
Expression	Graphite	-	N/A	N/A	N/A	923-546	950	624	40	923-656	940	614	40
Verve	Graphite	923-437	1264	528	54	923-300	1264	528	53	923-300	1264	528	53
Glass	Black Glass	923-022	1264	528	17	923-628	1264	528	29	923-628	1264	528	29
Firenza	Black Granite	8723GBK	1200	600	20	-	N/A	N/A	N/A	-	N/A	N/A	N/A
Pienza	White Limestone	8723LMS	1200	600	20	-	N/A	N/A	N/A	-	N/A	N/A	N/A
Edge+*	Black	-	N/A	N/A	N/A	923-006	788	464	43	923-025	778	454	43
STUDIO 2													
Bauhaus	Anthracite	8718AN	964	439	28	8718CFAN02	1060	534	28	8718BFAN02	1050	524	28
Bauhaus	Polished Stainless Steel	8718P	964	439	28	8718CFSS02	1060	534	28	8718BFSS02	1050	524	28
Profil	Anthracite	8717AN	950	426	13	8717CFAN02	1046	520	13	8717BFAN02	1036	510	13
Profil	Polished Stainless Steel	8717P	950	426	13	8717CFSS02	1046	520	13	8717BFSS02	1036	510	13
Steel 2	Graphite	923-738	1354	508	13	923-556	1500	528	27	923-556	1500	528	27
Expression	Graphite	-	N/A	N/A	N/A	923-574	1150	624	40	923-709	1140	614	40
Verve	Graphite	923-542	1500	528	54	923-514	1500	528	53	923-514	1500	528	53
Glass	Black Glass	923-135	1500	528	17	923-535	1500	528	29	923-535	1500	528	29
Firenza	Black Granite	8724GBK	1500	600	20	-	N/A	N/A	N/A	-	N/A	N/A	N/A
Pienza	White Limestone	8724LMS	1500	600	20	-	N/A	N/A	N/A	-	N/A	N/A	N/A
Edge+*	Black	-	N/A	N/A	N/A	923-017	988	464	43	923-028	978	454	43
STUDIO 3													
Bauhaus	Anthracite	8721AN	1354	439	28	-	N/A	N/A	N/A	8721BFAN03	1440	524	28
Bauhaus	Polished Stainless Steel	8721P	1354	439	28	-	N/A	N/A	N/A	8721BFSS03	1440	524	28
Profil	Anthracite	8720AN	1340	426	13	-	N/A	N/A	N/A	8720BFAN03	1426	510	13
Profil	Polished Stainless Steel	8720P	1340	426	13	-	N/A	N/A	N/A	8720BFSS03	1426	510	13
Steel 2	Graphite	923-154	1844	528	13	-	N/A	N/A	N/A	923-008	1990	528	27
Expression	Graphite	-	N/A	N/A	N/A	-	N/A	N/A	N/A	923-753	1530	614	40
Verve	Graphite	923-355	1990	528	54	-	N/A	N/A	N/A	923-729	1990	528	53
Glass	Black Glass	923-591	1990	528	17	-	N/A	N/A	N/A	923-084	1990	528	29
Edge+*	Black	-	N/A	N/A	N/A	-	N/A	N/A	N/A	923-040	1368	454	43

*When choosing an Edge+ frame an Edge kit is also required for installation.

Studio Frame Colour Supplements



A choice of three colours is available to choose from on Studio Profil and Bauhaus Anthracite Fronts and Steel 2, Expression and Verve Graphite fronts, these are: Metallic Red, Metallic Bronze and Ivory. Please use the product code provided with the following suffix for your choice of colour:

Metallic Red (RD), Metallic Bronze (BZ) and Ivory (IV).

- for example: Studio 1 Open Fronted Profil in Metallic Red = 8710ANRD



Studio 1, 2 & 3 Options & Accessories

OPEN FRONTED STUDIO FIRES

Product Code	Description
STUDIO 1	
8714GBK	Black Granite linings
8713	Flue gather*
STUDIO 2	
8715GBK	Black Granite linings
STUDIO 3	
8716GBK	Black Granite linings

* Flue gather automatically included with Open Fronted Studio 2 & 3 Fires.

UPGRADEABLE GLASS BEAD FUEL EFFECTS[◇]

STUDIO 1 - OPEN FRONTED

923-797	Clear Glass fuel effect upgrade
923-735	Black Glass fuel effect upgrade
923-746	Red Glass fuel effect upgrade**

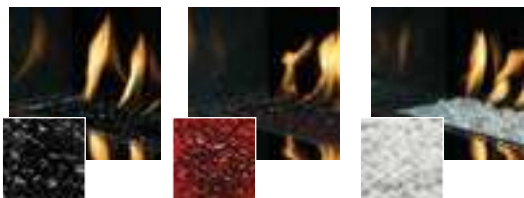
STUDIO 2 - OPEN FRONTED

923-751	Clear Glass fuel effect upgrade
923-760	Black Glass fuel effect upgrade
923-724	Red Glass fuel effect upgrade**

STUDIO 3 - OPEN FRONTED

923-718	Clear Glass fuel effect upgrade
923-706	Black Glass fuel effect upgrade
923-739	Red Glass fuel effect upgrade**

Black Glass Beads Red Glass Beads Clear Glass Beads



[◇] The Glass Bead fuel options are available as a retro-fit solution to replace and enliven any White Stone Studio Balanced Flue fires if desired.

** Please note: the red glass bead fuel effect transforms into a rich dark burgandy when the fire is on.

† For more Balanced Flue information and options please refer to our Concentric Flue System brochure which can be viewed or downloaded online at www.gazco.com

GLASS FRONTED STUDIO FIRES

Product Code	Description
8572	Warm air ducting kit (2 outlets)
8524	Balanced flue kit - vertical †
999-620	Remote system mains adaptor

STUDIO 1

8727CFEKO1	Edge fitting kit for conventional flue
8727BFEKO1	Edge fitting kit for balanced flue †
8727CFCWO1	Cool Wall fitting kit for conventional flue
8727BFCWO1	Cool Wall fitting kit for balanced flue †
8534	Balanced flue kit - up and out †
923-517	Black Reeded lining set for conventional flue
923-607	Black Reeded lining set for balanced flue
923-010	Vermiculite lining set for conventional flue
923-433	Vermiculite lining set for balanced flue
923-240	Black Glass lining set for conventional flue
923-282	Black Glass lining set for balanced flue

STUDIO 2

8727CFEKO2	Edge fitting kit for conventional flue
8727BFEKO2	Edge fitting kit for balanced flue †
8727CFCWO2	Cool Wall fitting kit for conventional flue
8727BFCWO2	Cool Wall fitting kit for balanced flue †
8509	Balanced flue kit - up and out †
923-744	Black Reeded lining set for conventional flue
923-476	Black Reeded lining set for balanced flue
923-337	Vermiculite lining set for conventional flue
923-938	Vermiculite lining set for balanced flue
923-267	Black Glass lining set for conventional flue
923-294	Black Glass lining set for balanced flue

STUDIO 3

8727BFEKO3	Edge fitting kit for balanced flue †
8727BFCWO3	Cool Wall fitting kit for balanced flue †
8567	Balanced flue kit - up and out †
923-381	Black Reeded lining set for balanced flue
923-795	Vermiculite lining set for balanced flue
923-365	Black Glass lining set for balanced flue

Studio Edge & Cool Wall Kits

Available for Glass Fronted Studio fires

Edge Kit

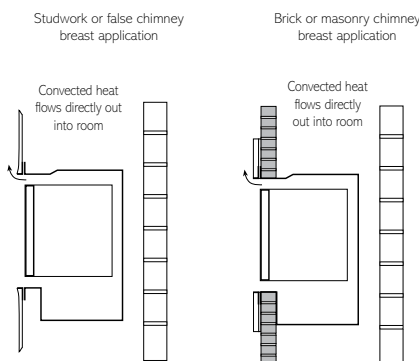
This kit is screw-mounted to the front flange of the outer firebox. The L-shaped attachments can either provide a 20mm return against which high temperature plasterboard/screed can be butted up for the 'clean edge' look or, if the firebox flange is on the outside of a brick or studwork wall, allow ceramic or stone tiles to be fixed with a similar look. The Edge Kit is finished in black to complement the Studio.

Cool Wall Kit

Again, screw-mounted to the front flange of the outer firebox, the 60mm deep U-shaped attachments of the Cool Wall kit are designed primarily for studwork false chimney breasts. The additional depth allows some of the heat to be vented up into the void above the firebox and then re-enter the room at a higher level. The effect is to produce a cooler wall immediately above the appliance than would otherwise be the case. The Cool Wall Kit is left unfinished so that it can be painted to match the front face of your fireplace.

Edge Kit

Installation method for:

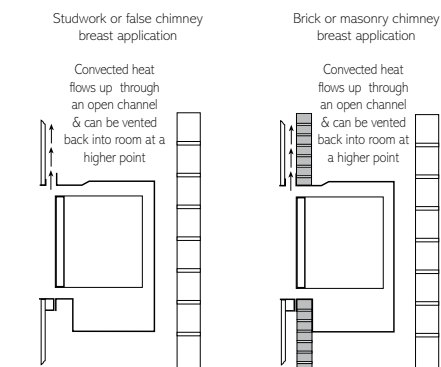


When using the Edge Kit the fire is recessed by 20mm from the finished wall surface and the kit is finished in black to complement the Studio.

NB: When using the Edge Kit, heat resistant board and high temperature finishing plaster must be used. Please refer to installation instructions for full details.

Cool Wall Kit

Installation method for:



When using the Cool Wall Kit the fire is recessed by 60mm from the finished wall surface and the kit is left unfinished so that it can be painted to match your decor.

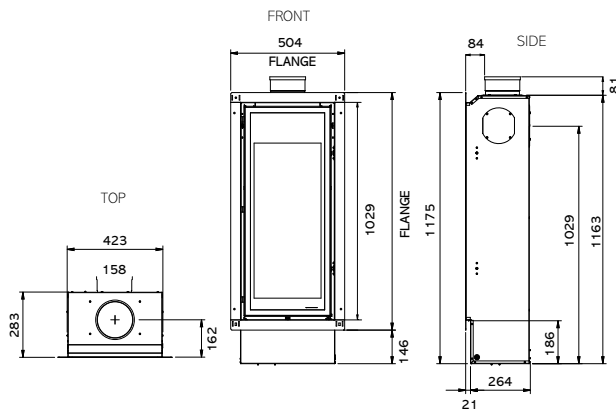
NB: Full installation information, including the requirement for the use of non-combustible materials, can be downloaded from www.gazco.com

Studio 22 Fires

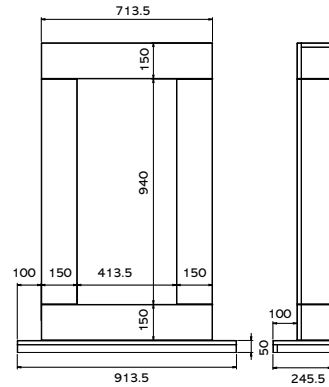
FIRE INFORMATION

Product Code	Flue Type	Gas Type	Fuel Effect	Heat Input	Heat Output	Efficiency	Remote Control	Lining
⊗ 8704BFLEC	Balanced flue	Nat. Gas	Logs	7.50kW	5.85kW	78%	Prog. Thermostatic	Vermiculite
⊗ P8704BFLEC	Balanced flue	LPG	Logs	7.00kW	5.46kW	78%	Prog. Thermostatic	Vermiculite

STUDIO 22 DIMENSIONS (mm)



SORRENTO DIMENSIONS (mm)



FRAME INFORMATION

Description	Frame Finish	Product Code	Frame Size (mm)		
			w	h	d
Bauhaus	Anthracite	8728BFAN22	524	1050	28
Bauhaus	Polished Stainless	8728BFSS22	524	1050	28
Profil	Anthracite	8726BFAN22	510	1036	13
Profil	Polished Stainless	8726BFSS22	510	1036	13
Steel 2	Graphite*	8729BFGP22	675	1320	13
Expression	Graphite*	923-786	614	1140	40
Verve	Graphite*	923-012	676	1320	51
Sorrento ^A	Natural Limestone	923-198	914	1290	246
Sorrento ^A	Graphite Granite	923-180	914	1290	246

STUDIO 22 ACCESSORIES AND OPTIONS

Product Code	Description
8727BFEK22	Edge fitting kit for balanced flue †
8727BFCW22	Cool Wall fitting kit for balanced flue †
8708	Balanced flue kit - rear †
8534	Balanced flue kit - up and out †
999-620	Remote system mains adaptor

△ Where the Studio 22 is fitted with a Sorrento surround the fire may only be installed using the rear flue exit.

† For more Balanced Flue information and options please refer to our Concentric Flue System brochure which can be viewed or downloaded online at www.gazco.com

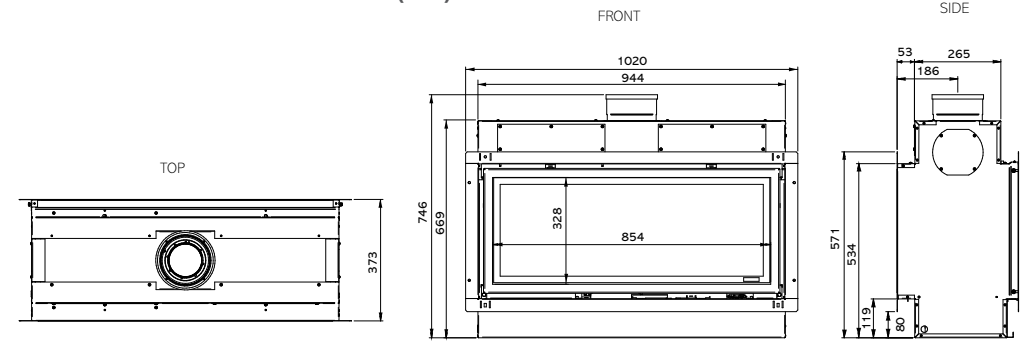
* A choice of 3 colours is available to choose from on Studio Profil & Bauhaus Anthracite Fronts & Steel 2, Expression Steel & Verve Graphite fronts, these are: Metallic Red, Metallic Blue, Metallic Bronze & Ivory. Please use the product code provided with the following suffix for your choice of colour: Metallic Red (RD), Metallic Bronze (BZ) & Ivory (IV) - for example: Studio 22 Verve in Metallic Red = 923-012RD

Studio 2 Duplex Fires

FIRE INFORMATION

Product Code	Flue Type	Gas Type	Fuel Effect	Heat Input	Heat Output	Efficiency	Remote Control	Lining
⊗ 123-319	Balanced flue	Nat. Gas	Logs	9.6kW	7.9kW	82%	Prog. Thermostatic	Vermiculite
⊗ 123-421	Balanced flue	LPG	Logs	9.3kW	7.6kW	82%	Prog. Thermostatic	Vermiculite
⊗ 123-329	Balanced flue	Nat. Gas	Logs	9.6kW	7.9kW	82%	Prog. Thermostatic	Black Reeded
⊗ 123-500	Balanced flue	LPG	Logs	9.3kW	7.6kW	82%	Prog. Thermostatic	Black Reeded

STUDIO 2 DUPLEX DIMENSIONS (mm)



FRAME INFORMATION

Description	Frame Finish	Product Code	Frame Size (mm)		
			w	h	d
Bauhaus	Anthracite	8718BFAN02	1050	524	28
Bauhaus	Polished Stainless	8718BFSS02	1050	524	28
Profil	Anthracite	8717BFAN02	1036	510	13
Profil	Polished Stainless	8717BFSS02	1036	510	13
Steel 2	Graphite	923-556	1500	528	30
Expression	Graphite	923-709	1140	614	40
Verve	Graphite	923-514	1500	528	56
Glass	Black Glass	923-535	1500	528	33.5
Edge+	Black	923-028	978	454	43

STUDIO 2 DUPLEX OPTIONS

Product Code	Description
8727BFEK02	Edge fitting kit for BF †
8727BFCW02	Cool Wall fitting kit for BF †
8572	Warm air ducting kit (2 outlets)
923-538	Duplex - Vermiculite Lining Set
923-696	Duplex - Black Reed Lining Set
8567	Balanced flue kit - up and out †
8524	Balanced flue kit - vertical †
999-201	Horizontal Exit terminal guard (required for below 2m) †
999-620	Remote system mains adaptor

† For more Balanced Flue information and options please refer to our Concentric Flue System brochure which can be viewed or downloaded online at www.gazco.com



Studio 1 & 2 Slimline Fires

STUDIO 1 SLIMLINE FIRE INFORMATION

Product Code	Description	Flue Type	Gas Type	Fuel Effect	Heat Input	Heat Output	Efficiency	Remote Control	Lining
⊗ 123-022	Studio 1 Slimline	Balanced	Nat. Gas	Logs	5.2kW	4.3kW	82%	Prog. Thermostatic	Vermiculite
⊗ 123-691	Studio 1 Slimline	Balanced	LPG	Logs	5.1kW	4.2kW	82%	Prog. Thermostatic	Vermiculite
⊗ 123-126	Studio 1 Slimline	Balanced	Nat. Gas	White Stones	5.2kW	4.3kW	82%	Prog. Thermostatic	Vermiculite
⊗ 123-756	Studio 1 Slimline	Balanced	LPG	White Stones	5.1kW	4.2kW	82%	Prog. Thermostatic	Vermiculite
⊗ 123-169	Studio 1 Slimline	Balanced	Nat. Gas	Logs	5.2kW	4.3kW	82%	Prog. Thermostatic	Black Reeded
⊗ 123-504	Studio 1 Slimline	Balanced	LPG	Logs	5.1kW	4.2kW	82%	Prog. Thermostatic	Black Reeded
⊗ 123-375	Studio 1 Slimline	Balanced	Nat. Gas	White Stones	5.2kW	4.3kW	82%	Prog. Thermostatic	Black Reeded
⊗ 123-460	Studio 1 Slimline	Balanced	LPG	White Stones	5.1kW	4.2kW	82%	Prog. Thermostatic	Black Reeded
⊗ 123-353	Studio 1 Slimline	Balanced	Nat. Gas	Logs	5.2kW	4.3kW	82%	Prog. Thermostatic	Brick-effect
⊗ 123-432	Studio 1 Slimline	Balanced	LPG	Logs	5.1kW	4.2kW	82%	Prog. Thermostatic	Brick-effect
⊗ 123-266	Studio 1 Slimline	Balanced	Nat. Gas	White Stones	5.2kW	4.3kW	82%	Prog. Thermostatic	Brick-effect
⊗ 123-497	Studio 1 Slimline	Balanced	LPG	White Stones	5.1kW	4.2kW	82%	Prog. Thermostatic	Brick-effect
⊗ 123-143	Studio 1 Slimline	Balanced	Nat. Gas	Logs	5.2kW	4.3kW	82%	Prog. Thermostatic	Black Glass
⊗ 123-623	Studio 1 Slimline	Balanced	LPG	Logs	5.1kW	4.2kW	82%	Prog. Thermostatic	Black Glass
⊗ 123-223	Studio 1 Slimline	Balanced	Nat. Gas	White Stones	5.2kW	4.3kW	82%	Prog. Thermostatic	Black Glass
⊗ 123-634	Studio 1 Slimline	Balanced	LPG	White Stones	5.1kW	4.2kW	82%	Prog. Thermostatic	Black Glass

STUDIO 2 SLIMLINE FIRE INFORMATION

Product Code	Description	Flue Type	Gas Type	Fuel Effect	Heat Input	Heat Output	Efficiency	Remote Control	Lining
⊗ 123-344	Studio 2 Slimline	Balanced	Nat. Gas	Logs	6.1kW	5.0kW	82%	Prog. Thermostatic	Vermiculite
⊗ 123-590	Studio 2 Slimline	Balanced	LPG	Logs	6.6kW	5.41kW	82%	Prog. Thermostatic	Vermiculite
⊗ 123-081	Studio 2 Slimline	Balanced	Nat. Gas	White Stones	6.1kW	5.0kW	82%	Prog. Thermostatic	Vermiculite
⊗ 123-599	Studio 2 Slimline	Balanced	LPG	White Stones	6.6kW	5.41kW	82%	Prog. Thermostatic	Vermiculite
⊗ 123-321	Studio 2 Slimline	Balanced	Nat. Gas	Logs	6.1kW	5.0kW	82%	Prog. Thermostatic	Black Reeded
⊗ 123-553	Studio 2 Slimline	Balanced	LPG	Logs	6.6kW	5.41kW	82%	Prog. Thermostatic	Black Reeded
⊗ 123-027	Studio 2 Slimline	Balanced	Nat. Gas	White Stones	6.1kW	5.0kW	82%	Prog. Thermostatic	Black Reeded
⊗ 123-583	Studio 2 Slimline	Balanced	LPG	White Stones	6.6kW	5.41kW	82%	Prog. Thermostatic	Black Reeded
⊗ 123-396	Studio 2 Slimline	Balanced	Nat. Gas	Logs	6.1kW	5.0kW	82%	Prog. Thermostatic	Brick-effect
⊗ 123-608	Studio 2 Slimline	Balanced	LPG	Logs	6.6kW	5.41kW	82%	Prog. Thermostatic	Brick-effect
⊗ 123-110	Studio 2 Slimline	Balanced	Nat. Gas	White Stones	6.1kW	5.0kW	82%	Prog. Thermostatic	Brick-effect
⊗ 123-615	Studio 2 Slimline	Balanced	LPG	White Stones	6.6kW	5.41kW	82%	Prog. Thermostatic	Brick-effect
⊗ 123-102	Studio 2 Slimline	Balanced	Nat. Gas	Logs	6.1kW	5.0kW	82%	Prog. Thermostatic	Black Glass
⊗ 123-545	Studio 2 Slimline	Balanced	LPG	Logs	6.6kW	5.41kW	82%	Prog. Thermostatic	Black Glass
⊗ 123-117	Studio 2 Slimline	Balanced	Nat. Gas	White Stones	6.1kW	5.0kW	82%	Prog. Thermostatic	Black Glass
⊗ 123-571	Studio 2 Slimline	Balanced	LPG	White Stones	6.6kW	5.41kW	82%	Prog. Thermostatic	Black Glass

STUDIO 1 SLIMLINE FRAME INFORMATION

Frame	Frame Finish	Product Code	Frame Size (mm)		
			w	h	d
Bauhaus	Anthracite*	8711BFAN01	850	524	28
Bauhaus	Polished Stainless	8711BFSS01	850	524	28
Profil	Anthracite*	8710BFAN01	836	510	13
Profil	Polished Stainless	8710BFSS01	836	510	13
Steel 2	Graphite*	923-883	1264	528	30
Expression	Graphite*	923-656	940	614	40
Verve	Graphite*	923-300	1264	528	56
Glass	Black Glass	923-628	1264	528	33.5
ZC Steel**	Graphite	923-715	940	615	27
ZC Glass**	Black Glass	923-757	940	615	31
ZC Glass**	White Glass	923-950	940	615	31

STUDIO 1 SLIMLINE MONACO INFORMATION

Monaco**	Concrete	923-089	1220	1379	225
Ext. Piece	Concrete	923-114	1220	300	225

STUDIO 2 SLIMLINE FRAME INFORMATION

Frame	Frame Finish	Product Code	Frame Size (mm)		
			w	h	d
Bauhaus	Anthracite*	8718BFAN02	1050	524	28
Bauhaus	Polished Stainless	8718BFSS02	1050	524	28
Profil	Anthracite*	8717BFAN02	1036	510	12.5
Profil	Polished Stainless	8717BFSS02	1036	510	12.5
Steel 2	Graphite*	923-556	1500	528	27
Expression	Graphite*	923-709	1140	614	40
Verve	Graphite*	923-514	1500	528	53
Glass	Black Glass	923-535	1500	528	29
ZC Steel**	Graphite	923-720	1140	615	27
ZC Glass**	Black Glass	923-772	1140	615	31
ZC Glass**	White Glass	923-987	1140	615	31

⋄ Available as a retro-fit solution to replace and enliven any White Stone Studio fires. Please note: the red glass bead fuel effect transforms into a rich dark burgandy when the fire is on.

‡ Available as an upgrade to Studio fires with a log effect fuel bed

** Please see page 83 for further dimensions. ZC Frames come complete with the Zero Clearance Box.

STUDIO 1 SLIMLINE OPTIONS

Product Code	Description
8727BFEK01	Edge fitting kit for BF †
8727BFCW01	Cool Wall fitting kit for BF †
923-733	Vermiculite Lining Set ‡
923-826	Black Reeded Lining Set ‡
923-765	Brick-effect Lining Set ‡
923-124	Black Glass Lining Set ‡
923-774	Clear Glass fuel effect upgrade ⋄
923-788	Black Glass fuel effect upgrade ⋄
923-792	Red Glass fuel effect upgrade ⋄
999-620	Remote system mains adaptor

STUDIO 2 SLIMLINE OPTIONS

Product Code	Description
8727BFEK02	Edge fitting kit for BF †
8727BFCW02	Cool Wall fitting kit for BF †
923-257	Vermiculite Lining Set ‡
923-226	Black Reeded Lining Set ‡
923-273	Brick-effect Lining Set ‡
923-314	Black Glass Lining Set ‡
923-797	Clear Glass fuel effect upgrade ⋄
923-735	Black Glass fuel effect upgrade ⋄
923-792	Red Glass fuel effect upgrade ⋄
999-620	Remote system mains adaptor

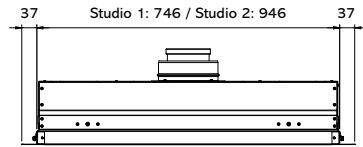
* A choice of 3 colours is available to choose from on these frames. They are: Metallic Red, Metallic Bronze & Ivory. Please use the product code provided with the following suffix for your choice of colour: Metallic Red (RD), Metallic Bronze (BZ) & Ivory (IV) - for example: Studio 2 Slimline Verve in Metallic Red = 923-709RD

Studio 1 & 2 Slimline Fires (continued)

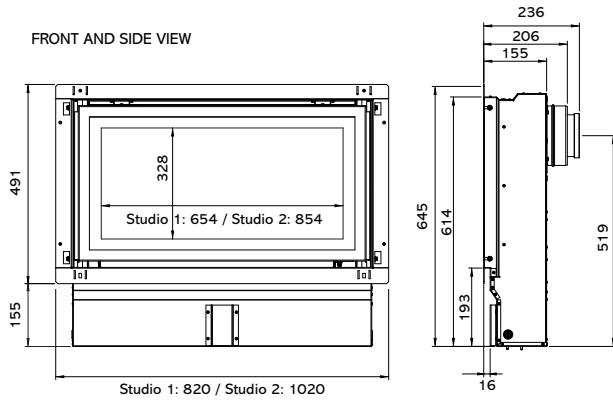
STUDIO SLIMLINE DIMENSIONS (mm)

Dimensions are the same for both models, except where specified

TOP VIEW



FRONT AND SIDE VIEW



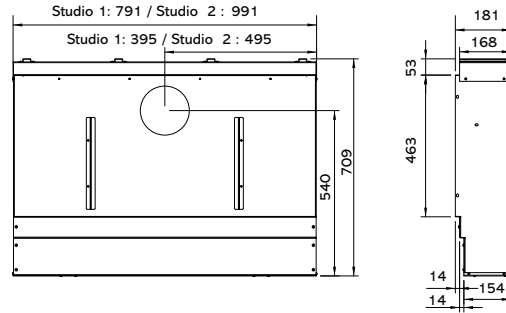
The Studio 1 and 2 Slimline comes complete with a specific rear exit balanced flue termination kit (8526) included.
395 x 200 x 200 mm (H x W x D) Guard supplied. Cut to length as required on site.



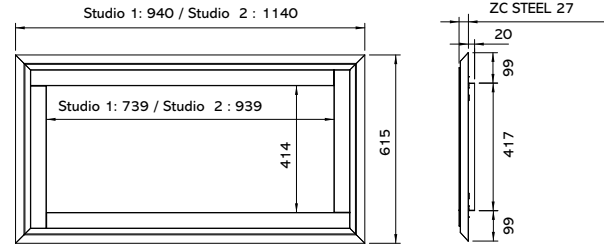
ZERO CLEARANCE FRAME DIMENSIONS (mm)

Dimensions are the same for both models, except where specified

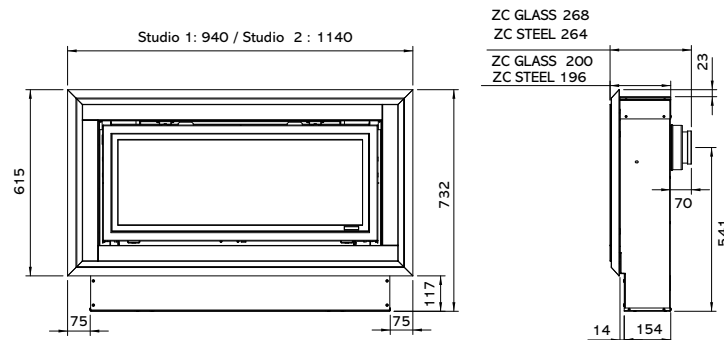
ZERO CLEARANCE BOX DIMENSIONS



FRAME DIMENSIONS

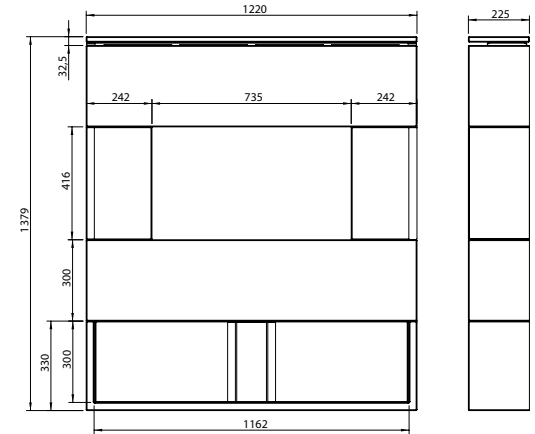


COMPLETE PRODUCT DIMENSIONS (FRAME & ZERO CLEARANCE BOX)

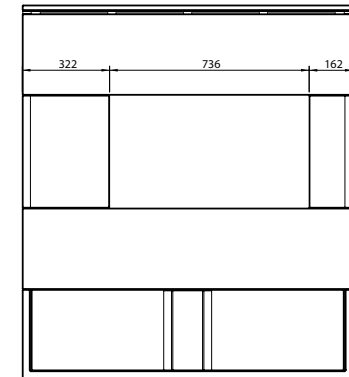


MONACO SURROUND DIMENSIONS (mm)

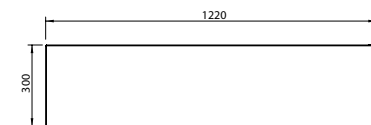
CENTRALLY ALIGNED FIRE



OFFSET FIRE



EXTENSION PIECE



Studio 1 Freestanding Supplied with Programmable Thermostatic Remote

STUDIO 1 FREESTANDING FIRE INFORMATION

Product Code	Front Finish	Flue Type	Gas Type	Fuel Effect	Heat Input	Heat Output	Efficiency	Lining
⊗ 508-011	Black	Conventional Flue	Nat. Gas	Logs	6.30kW	4.54kW	72%	Vermiculite
⊗ 508-020	Black	Conventional Flue	Nat. Gas	Logs	6.30kW	4.54kW	72%	Black Reeded
⊗ 508-147	Black	Conventional Flue	Nat. Gas	Logs	6.30kW	4.54kW	72%	Black Glass
⊗ 508-533	Black	Conventional Flue	LPG	Logs	6.90kW	4.97kW	72%	Vermiculite
⊗ 508-571	Black	Conventional Flue	LPG	Logs	6.90kW	4.97kW	72%	Black Reeded
⊗ 508-589	Black	Conventional Flue	LPG	Logs	6.90kW	4.97kW	72%	Black Glass
⊗ 508-055	White	Conventional Flue	Nat. Gas	Logs	6.30kW	4.54kW	72%	Vermiculite
⊗ 508-165	White	Conventional Flue	Nat. Gas	Logs	6.30kW	4.54kW	72%	Black Reeded
⊗ 508-199	White	Conventional Flue	Nat. Gas	Logs	6.30kW	4.54kW	72%	Black Glass
⊗ 508-490	White	Conventional Flue	LPG	Logs	6.90kW	4.97kW	72%	Vermiculite
⊗ 508-580	White	Conventional Flue	LPG	Logs	6.90kW	4.97kW	72%	Black Reeded
⊗ 508-606	White	Conventional Flue	LPG	Logs	6.90kW	4.97kW	72%	Black Glass

PEBBLE & STONE FUEL BED, CONVENTIONAL FLUE

⊗ 508-244	Black	Conventional Flue	Nat. Gas	Pebble & Stone	6.30kW	4.54kW	72%	Vermiculite
⊗ 508-398	Black	Conventional Flue	Nat. Gas	Pebble & Stone	6.30kW	4.54kW	72%	Black Reeded
⊗ 508-077	Black	Conventional Flue	Nat. Gas	Pebble & Stone	6.30kW	4.54kW	72%	Black Glass
⊗ 508-429	Black	Conventional Flue	LPG	Pebble & Stone	6.90kW	4.97kW	72%	Vermiculite
⊗ 508-437	Black	Conventional Flue	LPG	Pebble & Stone	6.90kW	4.97kW	72%	Black Reeded
⊗ 508-517	Black	Conventional Flue	LPG	Pebble & Stone	6.90kW	4.97kW	72%	Black Glass
⊗ 508-196	White	Conventional Flue	Nat. Gas	Pebble & Stone	6.30kW	4.54kW	72%	Vermiculite
⊗ 508-307	White	Conventional Flue	Nat. Gas	Pebble & Stone	6.30kW	4.54kW	72%	Black Reeded
⊗ 508-366	White	Conventional Flue	Nat. Gas	Pebble & Stone	6.30kW	4.54kW	72%	Black Glass
⊗ 508-478	White	Conventional Flue	LPG	Pebble & Stone	6.90kW	4.97kW	72%	Vermiculite
⊗ 508-500	White	Conventional Flue	LPG	Pebble & Stone	6.90kW	4.97kW	72%	Black Reeded
⊗ 508-615	White	Conventional Flue	LPG	Pebble & Stone	6.90kW	4.97kW	72%	Black Glass

DRIFTWOOD-EFFECT FUEL BED, CONVENTIONAL FLUE

⊗ 508-014	Black	Conventional Flue	Nat. Gas	Driftwood	6.30kW	4.54kW	72%	Vermiculite
⊗ 508-029	Black	Conventional Flue	Nat. Gas	Driftwood	6.30kW	4.54kW	72%	Black Reeded
⊗ 508-045	Black	Conventional Flue	Nat. Gas	Driftwood	6.30kW	4.54kW	72%	Black Glass
⊗ 508-409	Black	Conventional Flue	LPG	Driftwood	6.90kW	4.97kW	72%	Vermiculite
⊗ 508-420	Black	Conventional Flue	LPG	Driftwood	6.90kW	4.97kW	72%	Black Reeded
⊗ 508-440	Black	Conventional Flue	LPG	Driftwood	6.90kW	4.97kW	72%	Black Glass
⊗ 508-030	White	Conventional Flue	Nat. Gas	Driftwood	6.30kW	4.54kW	72%	Vermiculite
⊗ 508-059	White	Conventional Flue	Nat. Gas	Driftwood	6.30kW	4.54kW	72%	Black Reeded
⊗ 508-066	White	Conventional Flue	Nat. Gas	Driftwood	6.30kW	4.54kW	72%	Black Glass
⊗ 508-435	White	Conventional Flue	LPG	Driftwood	6.90kW	4.97kW	72%	Vermiculite
⊗ 508-456	White	Conventional Flue	LPG	Driftwood	6.90kW	4.97kW	72%	Black Reeded
⊗ 508-479	White	Conventional Flue	LPG	Driftwood	6.90kW	4.97kW	72%	Black Glass

LOG-EFFECT FUEL BED, BALANCED FLUE

Product Code	Front Finish	Flue Type	Gas Type	Fuel Effect	Heat Input	Heat Output	Efficiency	Lining
⊗ 508-204	Black	Balanced Flue	Nat. Gas	Logs	6.30kW	5.10kW	81%	Vermiculite
⊗ 508-213	Black	Balanced Flue	Nat. Gas	Logs	6.30kW	5.10kW	81%	Black Reeded
⊗ 508-248	Black	Balanced Flue	Nat. Gas	Logs	6.30kW	5.10kW	81%	Black Glass
⊗ 508-506	Black	Balanced Flue	LPG	Logs	6.30kW	5.10kW	81%	Vermiculite
⊗ 508-530	Black	Balanced Flue	LPG	Logs	6.30kW	5.10kW	81%	Black Reeded
⊗ 508-597	Black	Balanced Flue	LPG	Logs	6.30kW	5.10kW	81%	Black Glass
⊗ 508-120	White	Balanced Flue	Nat. Gas	Logs	6.30kW	5.10kW	81%	Vermiculite
⊗ 508-137	White	Balanced Flue	Nat. Gas	Logs	6.30kW	5.10kW	81%	Black Reeded
⊗ 508-151	White	Balanced Flue	Nat. Gas	Logs	6.30kW	5.10kW	81%	Black Glass
⊗ 508-410	White	Balanced Flue	LPG	Logs	6.30kW	5.10kW	81%	Vermiculite
⊗ 508-453	White	Balanced Flue	LPG	Logs	6.30kW	5.10kW	81%	Black Reeded
⊗ 508-488	White	Balanced Flue	LPG	Logs	6.30kW	5.10kW	81%	Black Glass

PEBBLE & STONE FUEL BED, BALANCED FLUE

⊗ 508-352	Black	Balanced Flue	Nat. Gas	Pebble & Stone	6.30kW	5.10kW	81%	Vermiculite
⊗ 508-379	Black	Balanced Flue	Nat. Gas	Pebble & Stone	6.30kW	5.10kW	81%	Black Reeded
⊗ 508-396	Black	Balanced Flue	Nat. Gas	Pebble & Stone	6.30kW	5.10kW	81%	Black Glass
⊗ 508-756	Black	Balanced Flue	LPG	Pebble & Stone	6.30kW	5.10kW	81%	Vermiculite
⊗ 508-722	Black	Balanced Flue	LPG	Pebble & Stone	6.30kW	5.10kW	81%	Black Reeded
⊗ 508-699	Black	Balanced Flue	LPG	Pebble & Stone	6.30kW	5.10kW	81%	Black Glass
⊗ 508-230	White	Balanced Flue	Nat. Gas	Pebble & Stone	6.30kW	5.10kW	81%	Vermiculite
⊗ 508-194	White	Balanced Flue	Nat. Gas	Pebble & Stone	6.30kW	5.10kW	81%	Black Reeded
⊗ 508-175	White	Balanced Flue	Nat. Gas	Pebble & Stone	6.30kW	5.10kW	81%	Black Glass
⊗ 508-459	White	Balanced Flue	LPG	Pebble & Stone	6.30kW	5.10kW	81%	Vermiculite
⊗ 508-483	White	Balanced Flue	LPG	Pebble & Stone	6.30kW	5.10kW	81%	Black Reeded
⊗ 508-510	White	Balanced Flue	LPG	Pebble & Stone	6.30kW	5.10kW	81%	Black Glass

DRIFTWOOD FUEL BED, BALANCED FLUE

⊗ 508-022	Black	Balanced Flue	Nat. Gas	Driftwood	6.30kW	5.10kW	81%	Vermiculite
⊗ 508-048	Black	Balanced Flue	Nat. Gas	Driftwood	6.30kW	5.10kW	81%	Black Reeded
⊗ 508-057	Black	Balanced Flue	Nat. Gas	Driftwood	6.30kW	5.10kW	81%	Black Glass
⊗ 508-412	Black	Balanced Flue	LPG	Driftwood	6.30kW	5.10kW	81%	Vermiculite
⊗ 508-447	Black	Balanced Flue	LPG	Driftwood	6.30kW	5.10kW	81%	Black Reeded
⊗ 508-465	Black	Balanced Flue	LPG	Driftwood	6.30kW	5.10kW	81%	Black Glass
⊗ 508-073	White	Balanced Flue	Nat. Gas	Driftwood	6.30kW	5.10kW	81%	Vermiculite
⊗ 508-081	White	Balanced Flue	Nat. Gas	Driftwood	6.30kW	5.10kW	81%	Black Reeded
⊗ 508-117	White	Balanced Flue	Nat. Gas	Driftwood	6.30kW	5.10kW	81%	Black Glass
⊗ 508-475	White	Balanced Flue	LPG	Driftwood	6.30kW	5.10kW	81%	Vermiculite
⊗ 508-492	White	Balanced Flue	LPG	Driftwood	6.30kW	5.10kW	81%	Black Reeded
⊗ 508-502	White	Balanced Flue	LPG	Driftwood	6.30kW	5.10kW	81%	Black Glass

STUDIO 1 FREESTANDING PLINTH & BENCH MOUNTING CHOICE (REQUIRED)

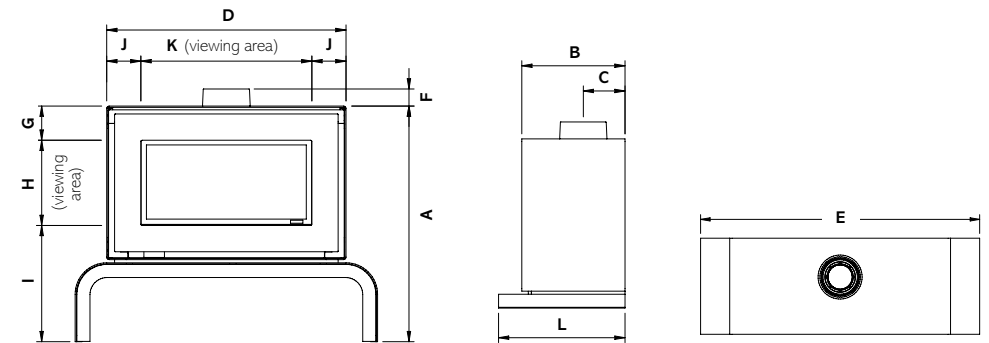
999-022	Studio 1 Freestanding Plinth - Black
999-035	Studio 1 Freestanding Plinth - White
999-101	Studio 1 Freestanding Bench - Black
999-114	Studio 1 Freestanding Bench - White

ACCESSORIES

923-517	Studio 1 Conventional Flue - Black Reeded Lining Set
923-010	Studio 1 Conventional Flue - Vermiculite Lining Set
923-240	Studio 1 Conventional Flue - Black Glass Lining Set
923-607	Studio 1 Balanced Flue - Black Reeded Lining Set
923-433	Studio 1 Balanced Flue - Vermiculite Lining Set
923-282	Studio 1 Balanced Flue - Black Glass Lining Set
999-620	Remote System Mains Adaptor

STUDIO FREESTANDING GAS DIMENSIONS (mm)

All sizes in mm	A	B	C	D	E	F	G	H	I	J	K	L
Studio 1 FS Bench	896	396	CF: 148 BF: 160	910	1150	CF: 43 BF: 65	130	324	442	130	650	-
Studio 1 FS Plinth	649	396	CF: 148 BF: 160	910	1105	CF: 43 BF: 65	130	324	195	130	650	485



Studio 1 Freestanding Conventional Flue with Black front and bench, Driftwood-effect fuel bed and Black Glass lining.

Studio 2 Freestanding

Supplied with Programmable Thermostatic Remote

STUDIO 2 FREESTANDING FIRE INFORMATION

Product Code	Front Finish	Flue Type	Gas Type	Fuel Effect	Heat Input	Heat Output	Efficiency	Lining
LOG-EFFECT FUEL BED, CONVENTIONAL FLUE								
508-346	Black	Conventional Flue	Nat. Gas	Logs	8.50kW	6.90kW	81%	Vermiculite
508-387	Black	Conventional Flue	Nat. Gas	Logs	8.50kW	6.90kW	81%	Black Reeded
508-094	Black	Conventional Flue	Nat. Gas	Logs	8.50kW	6.90kW	81%	Black Glass
508-599	Black	Conventional Flue	LPG	Logs	8.50kW	6.90kW	81%	Vermiculite
508-612	Black	Conventional Flue	LPG	Logs	8.50kW	6.90kW	81%	Black Reeded
508-426	Black	Conventional Flue	LPG	Logs	8.50kW	6.90kW	81%	Black Glass
508-315	White	Conventional Flue	Nat. Gas	Logs	8.50kW	6.90kW	81%	Vermiculite
508-332	White	Conventional Flue	Nat. Gas	Logs	8.50kW	6.90kW	81%	Black Reeded
508-187	White	Conventional Flue	Nat. Gas	Logs	8.50kW	6.90kW	81%	Black Reeded
508-646	White	Conventional Flue	LPG	Logs	8.50kW	6.90kW	81%	Vermiculite
508-695	White	Conventional Flue	LPG	Logs	8.50kW	6.90kW	81%	Black Reeded
508-418	White	Conventional Flue	LPG	Logs	8.50kW	6.90kW	81%	Black Glass

PEBBLE & STONE FUEL BED, CONVENTIONAL FLUE

508-098	Black	Conventional Flue	Nat. Gas	Pebble & Stone	8.50kW	6.90kW	81%	Vermiculite
508-191	Black	Conventional Flue	Nat. Gas	Pebble & Stone	8.50kW	6.90kW	81%	Black Reeded
508-207	Black	Conventional Flue	Nat. Gas	Pebble & Stone	8.50kW	6.90kW	81%	Black Glass
508-622	Black	Conventional Flue	LPG	Pebble & Stone	8.50kW	6.90kW	81%	Vermiculite
508-630	Black	Conventional Flue	LPG	Pebble & Stone	8.50kW	6.90kW	81%	Black Reeded
508-651	Black	Conventional Flue	LPG	Pebble & Stone	8.50kW	6.90kW	81%	Black Glass
508-209	White	Conventional Flue	Nat. Gas	Pebble & Stone	8.50kW	6.90kW	81%	Vermiculite
508-260	White	Conventional Flue	Nat. Gas	Pebble & Stone	8.50kW	6.90kW	81%	Black Reeded
508-282	White	Conventional Flue	Nat. Gas	Pebble & Stone	8.50kW	6.90kW	81%	Black Glass
508-717	White	Conventional Flue	LPG	Pebble & Stone	8.50kW	6.90kW	81%	Vermiculite
508-731	White	Conventional Flue	LPG	Pebble & Stone	8.50kW	6.90kW	81%	Black Reeded
508-750	White	Conventional Flue	LPG	Pebble & Stone	8.50kW	6.90kW	81%	Black Glass

DRIFTWOOD-EFFECT FUEL BED, CONVENTIONAL FLUE

508-106	Black	Conventional Flue	Nat. Gas	Driftwood	8.50kW	6.90kW	81%	Vermiculite
508-145	Black	Conventional Flue	Nat. Gas	Driftwood	8.50kW	6.90kW	81%	Black Reeded
508-201	Black	Conventional Flue	Nat. Gas	Driftwood	8.50kW	6.90kW	81%	Black Glass
508-425	Black	Conventional Flue	LPG	Driftwood	8.50kW	6.90kW	81%	Vermiculite
508-487	Black	Conventional Flue	LPG	Driftwood	8.50kW	6.90kW	81%	Black Reeded
508-498	Black	Conventional Flue	LPG	Driftwood	8.50kW	6.90kW	81%	Black Glass
508-226	White	Conventional Flue	Nat. Gas	Driftwood	8.50kW	6.90kW	81%	Vermiculite
508-272	White	Conventional Flue	Nat. Gas	Driftwood	8.50kW	6.90kW	81%	Black Reeded
508-303	White	Conventional Flue	Nat. Gas	Driftwood	8.50kW	6.90kW	81%	Black Glass
508-519	White	Conventional Flue	LPG	Driftwood	8.50kW	6.90kW	81%	Vermiculite
508-538	White	Conventional Flue	LPG	Driftwood	8.50kW	6.90kW	81%	Black Reeded
508-581	White	Conventional Flue	LPG	Driftwood	8.50kW	6.90kW	81%	Black Glass

Product Code	Front Finish	Flue Type	Gas Type	Fuel Effect	Heat Input	Heat Output	Efficiency	Lining
LOG-EFFECT FUEL BED, BALANCED FLUE								
508-002	Black	Balanced Flue	Nat. Gas	Logs	8.50kW	6.90kW	81%	Vermiculite
508-010	Black	Balanced Flue	Nat. Gas	Logs	8.50kW	6.90kW	81%	Black Reeded
508-027	Black	Balanced Flue	Nat. Gas	Logs	8.50kW	6.90kW	81%	Black Glass
508-400	Black	Balanced Flue	LPG	Logs	8.00kW	6.50kW	81%	Vermiculite
508-432	Black	Balanced Flue	LPG	Logs	8.00kW	6.50kW	81%	Black Reeded
508-444	Black	Balanced Flue	LPG	Logs	8.00kW	6.50kW	81%	Black Glass
508-239	White	Balanced Flue	Nat. Gas	Logs	8.50kW	6.90kW	81%	Vermiculite
508-287	White	Balanced Flue	Nat. Gas	Logs	8.50kW	6.90kW	81%	Black Reeded
508-102	White	Balanced Flue	Nat. Gas	Logs	8.50kW	6.90kW	81%	Black Glass
508-462	White	Balanced Flue	LPG	Logs	8.00kW	6.50kW	81%	Vermiculite
508-550	White	Balanced Flue	LPG	Logs	8.00kW	6.50kW	81%	Black Reeded
508-640	White	Balanced Flue	LPG	Logs	8.00kW	6.50kW	81%	Black Glass

PEBBLE & STONE FUEL BED, BALANCED FLUE

508-018	Black	Balanced Flue	Nat. Gas	Pebble & Stone	8.50kW	6.90kW	81%	Vermiculite
508-005	Black	Balanced Flue	Nat. Gas	Pebble & Stone	8.50kW	6.90kW	81%	Black Reeded
508-033	Black	Balanced Flue	Nat. Gas	Pebble & Stone	8.50kW	6.90kW	81%	Black Glass
508-470	Black	Balanced Flue	LPG	Pebble & Stone	8.00kW	6.50kW	81%	Vermiculite
508-402	Black	Balanced Flue	LPG	Pebble & Stone	8.00kW	6.50kW	81%	Black Reeded
508-527	Black	Balanced Flue	LPG	Pebble & Stone	8.00kW	6.50kW	81%	Black Glass
508-288	White	Balanced Flue	Nat. Gas	Pebble & Stone	8.50kW	6.90kW	81%	Vermiculite
508-300	White	Balanced Flue	Nat. Gas	Pebble & Stone	8.50kW	6.90kW	81%	Black Reeded
508-322	White	Balanced Flue	Nat. Gas	Pebble & Stone	8.50kW	6.90kW	81%	Black Glass
508-407	White	Balanced Flue	LPG	Pebble & Stone	8.00kW	6.50kW	81%	Vermiculite
508-421	White	Balanced Flue	LPG	Pebble & Stone	8.00kW	6.50kW	81%	Black Reeded
508-508	White	Balanced Flue	LPG	Pebble & Stone	8.00kW	6.50kW	81%	Black Glass

DRIFTWOOD-EFFECT FUEL BED, BALANCED FLUE

508-127	Black	Balanced Flue	Nat. Gas	Driftwood	8.50kW	6.90kW	81%	Vermiculite
508-160	Black	Balanced Flue	Nat. Gas	Driftwood	8.50kW	6.90kW	81%	Black Reeded
508-171	Black	Balanced Flue	Nat. Gas	Driftwood	8.50kW	6.90kW	81%	Black Glass
508-416	Black	Balanced Flue	LPG	Driftwood	8.00kW	6.50kW	81%	Vermiculite
508-544	Black	Balanced Flue	LPG	Driftwood	8.00kW	6.50kW	81%	Black Reeded
508-562	Black	Balanced Flue	LPG	Driftwood	8.00kW	6.50kW	81%	Black Glass
508-296	White	Balanced Flue	Nat. Gas	Driftwood	8.50kW	6.90kW	81%	Vermiculite
508-339	White	Balanced Flue	Nat. Gas	Driftwood	8.50kW	6.90kW	81%	Black Reeded
508-382	White	Balanced Flue	Nat. Gas	Driftwood	8.50kW	6.90kW	81%	Black Glass
508-575	White	Balanced Flue	LPG	Driftwood	8.00kW	6.50kW	81%	Vermiculite
508-600	White	Balanced Flue	LPG	Driftwood	8.00kW	6.50kW	81%	Black Reeded
508-655	White	Balanced Flue	LPG	Driftwood	8.00kW	6.50kW	81%	Black Glass

STUDIO 2 FREESTANDING PLINTH & BENCH MOUNTING CHOICE (REQUIRED)

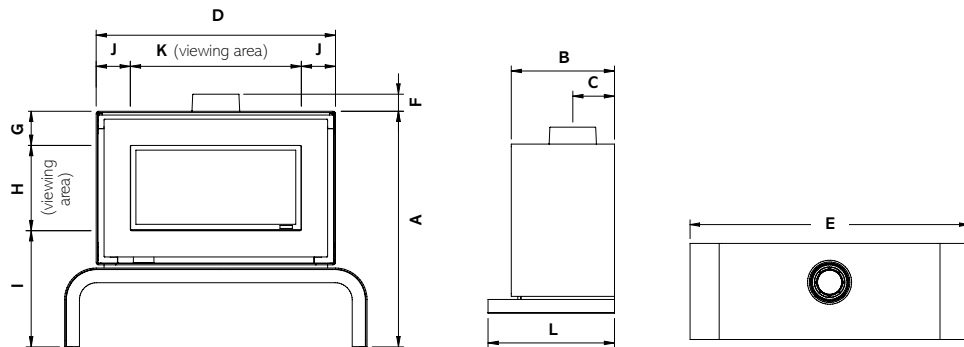
999-048	Studio 2 Freestanding Plinth - Black
999-087	Studio 2 Freestanding Plinth - White
999-127	Studio 2 Freestanding Bench - Black
999-166	Studio 2 Freestanding Bench - White

ACCESSORIES

923-744	Studio 2 Conventional Flue - Black Reeded Lining Set
923-337	Studio 2 Conventional Flue - Vermiculite Lining Set
923-267	Studio 2 Conventional Flue - Black Glass Lining Set
923-476	Studio 2 Balanced Flue - Black Reeded Lining Set
923-938	Studio 2 Balanced Flue - Vermiculite Lining Set
923-294	Studio 2 Balanced Flue - Black Glass Lining Set
999-620	Remote System Mains Adaptor

STUDIO FREESTANDING GAS DIMENSIONS (mm)

All sizes in mm	A	B	C	D	E	F	G	H	I	J	K	L
Studio 2 FS Bench	896	396	CF: 148 BF: 160	1110	1350	CF: 43 BF: 65	130	324	442	130	850	-
Studio 2 FS Plinth	649	396	CF: 148 BF: 160	1110	1305	CF: 43 BF: 65	130	324	195	130	850	485



Studio 2 Freestanding Conventional Flue with White front and bench, Pebble & Stone fuel bed and Black Reeded lining.

Your Home & Flue Requirements...

Conventional Flue

Conventional flue systems are for Gazco's Open Fronted and some Glass Fronted gas fires. They are easily recognisable as either a conventional brick or stone chimney, or as a pre-fabricated chimney system. Should your home have neither at present, it is usually possible to have a pre-fabricated system installed in your home if required.



Brick/Stone Chimney

(Class 1)

The chimney stack rises well above the roofline and is topped by a traditional chimney pot or gas terminal. This type of chimney relies on the natural circulation of heated air to expel the products of combustion up your chimney.



Pre-fabricated Flues

(Class 1 & 2)

You will see a metal flue cowl on your roof. Some are all metal whilst others may terminate through a short rectangular pot (but without a chimney stack). These flues create the same circulation of heated air as a brick or stone chimney.

Balanced Flue

Balanced flues work in conjunction with Gazco's Glass Fronted gas fires only. The appliance is completely sealed from the room into which it is installed (so there are no draughts and heating efficiency is increased) and a twin-wall pipe vents directly to an outside wall.



Balanced Flue

(No chimney required)

Air for combustion is drawn in through the outer pipe whilst the inner pipe removes the combustion gases to the exterior of the property. Depending on the fire selected, the twin-walled pipe may exit horizontally through an external wall or vertically through the roof. Gazco offers a comprehensive range of balanced flue system components. Please refer to our dedicated Concentric Flue System brochure which can be requested from your retailer or viewed online at www.gazco.com.

No Air Vent Required (UK)



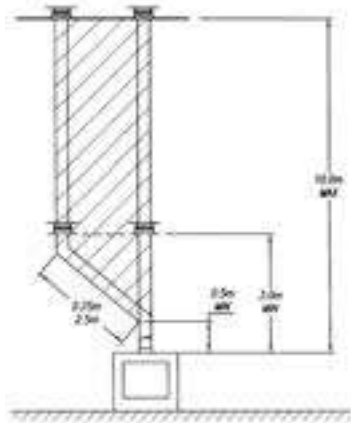
All fires shown with this symbol have the advantage of not normally requiring an air vent*. Please discuss this in full with your local retailer.

*Requirements in the Republic of Ireland are different.

Balanced Flue Options

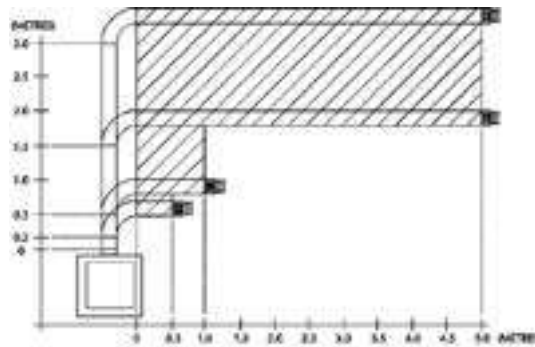
Gazco offers a comprehensive range of balanced flue system components. Please refer to our dedicated Concentric Flue System brochure which can be requested from your retailer or viewed online at www.gazco.com.

Vertical from the top of the appliance



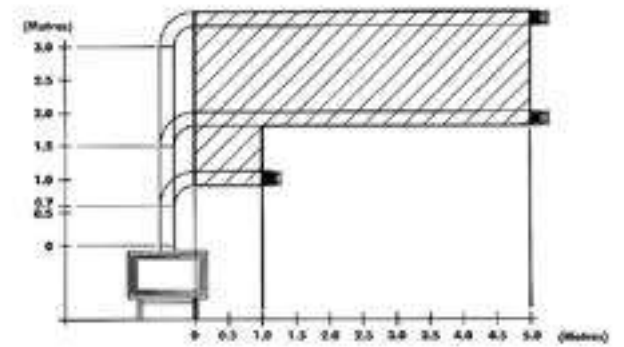
All Studio sizes

Vertical from the top of the appliance then horizontally out



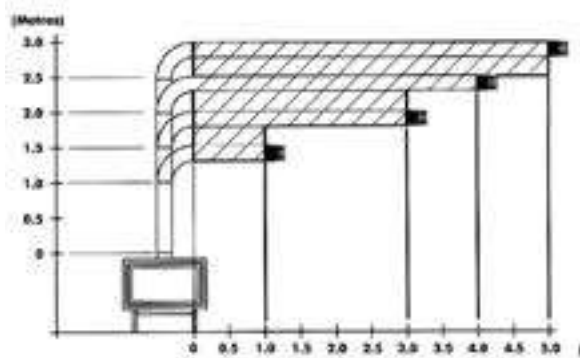
Studio 1 & 22

Vertical from the top of the appliance then horizontally out - Studio 2 requires a minimum 700mm rise from the top of the unit



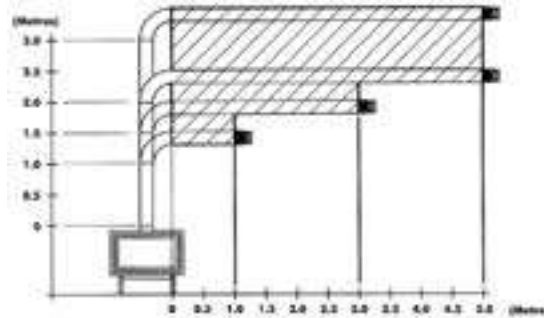
Studio 2

Vertical from the top of the appliance then horizontally out



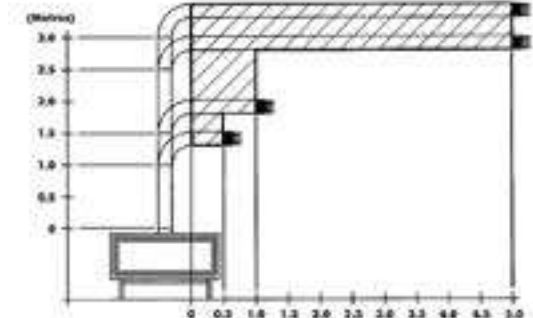
Studio 2 Duplex - LPG

Vertical from the top of the appliance then horizontally out



Studio 2 Duplex - Nat Gas

Vertical from the top of the appliance then horizontally out - Studio 3 requires a minimum 1000mm rise from the top of the unit



Studio 3

Important Information

Technical Specifications

All specifications given in this brochure are approximate. Actual specifications for each individual product will vary according to model. Your Gazco retailer will be pleased to provide any further information you require. Alternatively you may view or download specification sheets from www.gazco.com.

Installation and Safety

Gazco gas fires must be fitted by a qualified gas installer (Gas Safe registered in the United Kingdom or Bord Gáis registered in the Republic of Ireland) who should also verify the proposed site conditions are fully suitable for the product selected. Complete installation instructions for many models can be obtained prior to purchase by viewing or downloading them from www.gazco.com. Please note that all parts of these fires, particularly the glass panel in the door, become extremely hot during operation and can result in serious injury and burns if touched. It is therefore recommended that a fireguard complying with BS 8423:2002 is used in the presence of young children, the elderly or infirm.

Colours/Flame pictures

Owing to variations in studio lighting and printing inks, the finishes/colours of fires illustrated in this brochure may differ slightly from actual models. Before purchasing, please ask your retailer to show you finish/colour samples. Whilst all the flame pictures shown in this brochure are of actual fires, flame pictures may vary depending on the installation, flue conditions and geographical/surrounding features that may effect the efficiency of the flue.

Care and maintenance

Traditional materials, such as polished steel and brass, tarnish on contact with air, especially when

also exposed to heat. To help minimise this effect, we recommend fires receive regular treatment with suitable proprietary cleaners. Additionally, please remember that gas fires will require servicing annually by a qualified gas installer Gas Safe registered in the United Kingdom or RGII registered in the Republic of Ireland).

Warranty and Product Improvement

Your Gazco Expert Retailer will provide you with a Two Year Warranty for your new gas fire. This can be extended to a Five Year Warranty provided your fire has been registered with Gazco. The second and subsequent years are dependant on the appliance being serviced 12 months after installation and annually thereafter and exclude certain consumable parts. Fires purchased outside of Gazco's Expert Retailer Network will carry a standard 1 Year Non-Extendable Warranty. Full warranty terms and conditions are available to view at www.gazco.com.



Gazco pursue a policy of continuous product improvement, therefore, whilst our products are correct at the time of the photography, we reserve the right to make alterations and amendments. Exact product details should be discussed with your retailer at the time of purchase.

Air Ventilation for Gas Fires

To comply with gas appliance installation regulations, all Studio 2 and 3 Open Fronted fires and all Glass Fronted Studio 2 fires with a conventional flue require additional ventilation into your room. For further information, please consult either your Gazco retailer or the Gazco Technical Information on our website www.gazco.com to confirm the ventilation required. All other fires featured in this brochure do not require additional ventilation.

Gazco gratefully acknowledges the assistance of the following companies with photographic settings:

Furnishings and Ornaments:- www.amara.com; www.furniturevillage.co.uk; www.lauraashley.com; www.faginsantiques.com; www.theorangetree.co.uk; www.habitat.co.uk; www.houseoffraser.co.uk; www.ashorejewellery.co.uk; www.eclectique.co.uk; www.debenhams.com; www.next.co.uk; www.mokodirect.co.uk; www.marksandspencer.com; www.rockettstgeorge.co.uk; www.frenchconnection.com; www.wayfair.co.uk; www.urbanoutfitters.com/uk; www.tkmaxx.com; www.homesense.com; www.johnlewis.com; www.coxandcox.co.uk; www.urbanara.co.uk • **Lighting:-** www.amoslighting.co.uk • **Wood Mantels:-** www.stovax.com • **Stone Mantels:-** www.farmington.co.uk; www.bnsp.co.uk; www.grandisson.com; www.rudloe-stone.com • **Wood flooring:-** www.beechbros.co.uk • **Tiles & Stone floors:-** www.originalstyle.com • **Televisions:-** www.heavitreeradio.co.uk • **Plants:-** www.stbridgetnurseryseries.co.uk • **Paintings:-** www.easyart.com

Gazco Gas Fires

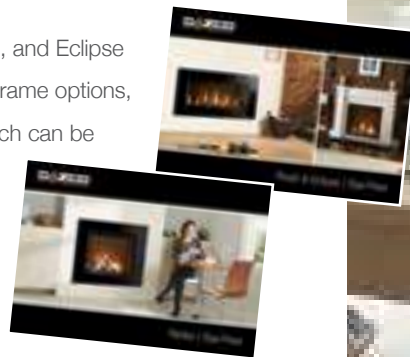
Eclipse 100 Icon with Black Reeded Lining



Alongside the Studio Gas fire range, Gazco offer the stunning Reflex, Riva2, and Eclipse gas fires. Featuring realistic logs, superb flames and a choice of lining and frame options, these versatile portrait and landscape fires instantly create a focal point which can be tailored to suit your interior.



To view the Gazco Reflex and Riva2 & Eclipse brochures, simply scan this QR code, visit www.gazco.com or speak to your local Gazco retailer.



Reflex 75T Edge with Brick-effect lining and Grafton Mantel in Antique Marble with matching slip-sets and small hearth

Studio 3 Balanced Flue, Verve frame with
Pebble & Stone fuel bed and Black Glass lining



Gazco Limited

Osprey Road, Sowton Industrial Estate, Exeter, Devon, England EX2 7JG

Tel: 01392 261999 • Fax: 01392 444148 • E-mail: info@gazco.com • www.gazco.com



To view & download
our complete range
of brochures, simply
scan this code or visit
www.gazco.com

Your Gazco stockist:

£3.00

GZSTUDIO0517

